



FARONICS
DATAIGLOO™

AUTOMATED Data Redirection

User Guide



FARONICS™
Intelligent Solutions for ABSOLUTE Control

www.faronics.com



Last modified: July, 2019

© 1999–2019 Faronics Corporation. All rights reserved. Faronics, Deep Freeze, Deep Freeze Cloud, Faronics Core Console, Faronics Anti-Executable, Faronics Anti-Virus, Faronics Device Filter, Faronics Data Igloo, Faronics Power Save, Faronics Insight, Faronics System Profiler, and WINSelect are trademarks and/or registered trademarks of Faronics Corporation. All other company and product names are trademarks of their respective owners.



Contents

Preface	5
Important Information	6
About Faronics	6
Product Documentation	6
Technical Support	7
Introduction	9
System Requirements	10
Installing Data Igloo	11
Installing Data Igloo	12
Accessing Data Igloo	14
Using Data Igloo	15
Data Igloo Overview	16
Deep Freeze Status	17
ThawSpace	18
User Profile Redirection	19
Creating a User Profile Redirection (for Existing User Profiles)	20
Automatically Redirecting Newly Created User Profiles	23
Removing a User Profile Redirection	23
Folder Redirection	26
Example	27
Creating a new Folder Redirection	27
Removing a Folder Redirection	30
Registry Key Redirection	31
Creating a Registry Key Redirection	32
Removing a Registry Key Redirection	35
Closing Data Igloo	36
Logging Events in Data Igloo	37
Data Igloo Error Dialog	37
Data Igloo Log File	37
Command Line	38
Uninstalling Data Igloo	41
Uninstalling Data Igloo with the Installer	42
Uninstalling Data Igloo via Add or Remove Programs in Windows	44
Appendix A Redirecting to Hidden ThawSpaces	45
Appendix B Best Practices for Installing Using Imaging	47



Appendix C Example User Profile Redirection to a Real Partition 49

Appendix D Example Program Redirection to a Real Partition 53

Appendix E Using Data Igloo with Microsoft Security Essentials 59

Appendix F Redirecting Event Logs using Data Igloo 63



Preface

This user guide explains how to install and use Data Igloo.

Topics

[Important Information](#)

[Technical Support](#)



Important Information

This section contains important information about your Faronics Product.

About Faronics

Faronics delivers market-leading solutions that help manage, simplify, and secure complex IT environments. Our products ensure 100% machine availability, and have dramatically impacted the day-to-day lives of thousands of information technology professionals. Fueled by a market-centric focus, Faronics' technology innovations benefit educational institutions, health care facilities, libraries, government organizations, and corporations.

Product Documentation

The following documents form the Data Igloo documentation set:

- Data Igloo User Guide — This document guides you how to use the product.
- Data Igloo Release Notes — This document lists the new features, known issues, and closed issues.



Technical Support

Every effort has been made to design this software for ease of use and to be problem free. If problems are encountered, contact Technical Support.

Technical Support:

www.faronics.com/support

Web:

www.faronics.com





Introduction

Data Igloo was created to work with Deep Freeze. Deep Freeze protects a computer and restores it to the original state on reboot. Data Igloo is a utility that allows you to redirect User Profiles, Folders, and Registry Keys to a different location on your computer and retain data even after a reboot when the computer is protected by Deep Freeze.

Data Igloo can also be used independently without installing Deep Freeze. Data Igloo provides an easy way to create NTFS Junction Points and NTFS Symbolic Links using a GUI.

Topics

[System Requirements](#)



System Requirements

The system requirements for Data Igloo are:

- Windows XP, Windows 7, Windows 8.1 or Windows 10 version 1903 (32-bit and 64-bit)
- Windows Server 2003, 2008 R2, 2012, 2016, or 2019
- Microsoft .NET 2.0 (SP1) or higher
- Deep Freeze Enterprise or Deep Freeze Standard (6.3 or higher). This is applicable only if you are using Deep Freeze with Data Igloo. Data Igloo can be used independently without installing Deep Freeze.



Installing Data Igloo

This chapter describes how to install Data Igloo.

Topics

[Installing Data Igloo](#)



Installing Data Igloo

To install Data Igloo, complete the following steps:



If .NET is not installed on your computer, the installer will automatically download it from the Internet and install it. Ensure that your computer is connected to the Internet.

1. Double-click *Faronics_IGS.exe*. Click *Next*.



2. Read and accept the License Agreement. Click *Next*.





3. Enter the *User Name* and *Organization*. Click *Next*.

Faronics Data Igloo Standard - InstallShield Wizard

Customer Information

Please enter your information.

User Name:
Faronics Corporation

Organization:
Faronics Corporation

InstallShield

< Back Next > Cancel

4. The default location for Data Igloo is *C:\Program Files\Faronics\Data Igloo Standard*. Click *Change...* to change the location where Data Igloo is installed. Click *Next*.

Faronics Data Igloo Standard - InstallShield Wizard

Destination Folder

Click Next to install to this folder, or click Change to install to a different folder.

Install Faronics Data Igloo Standard to:
C:\Program Files\Faronics\Data Igloo Standard\

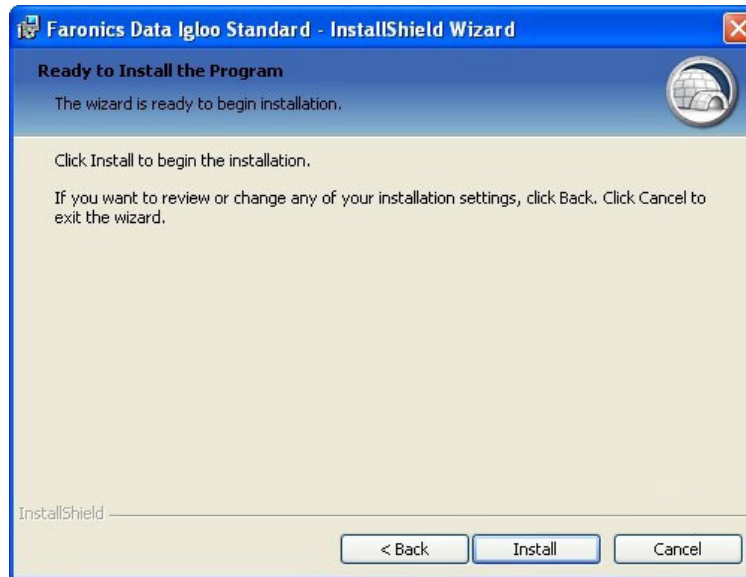
Change...

InstallShield

< Back Next > Cancel



5. Click *Install* to install Data Igloo.



6. Click *Finish* to complete installation.



While it is possible to install Data Igloo when Deep Freeze status is *Frozen*, redirections created will not remain after a reboot. This is useful for testing redirections. It is not possible to uninstall or repair Data Igloo when Deep Freeze status is *Frozen*.

Accessing Data Igloo

Data Igloo can be accessed via *Start > Programs > Faronics > Data Igloo*.



Using Data Igloo

This chapter explains how to use Data Igloo.

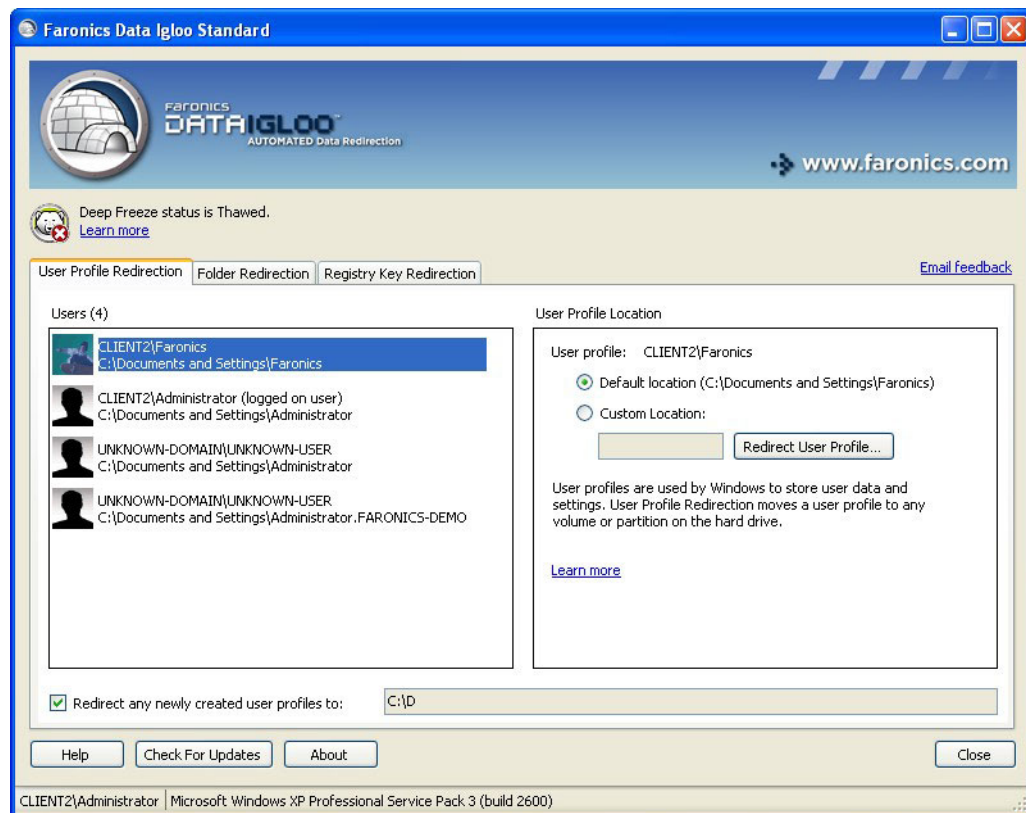
Topics

- [Data Igloo Overview](#)
- [Deep Freeze Status](#)
- [User Profile Redirection](#)
- [Folder Redirection](#)
- [Registry Key Redirection](#)
- [Closing Data Igloo](#)
- [Logging Events in Data Igloo](#)
- [Command Line](#)



Data Igloo Overview

The following screen is displayed when Data Igloo is launched:



- Deep Freeze Status Icon — The status of Deep Freeze is displayed.
- Tabs — Data Igloo provides the User Profile Redirection, Folder Redirection and Registry Key Redirection tabs. All tabs are explained in detail further in the user guide.
- Help — Launches the Online Help.
- Check for Updates — Checks if there is a new version of Data Igloo available.
- About — Displays information about the Data Igloo version and the End User License Agreement.
- Status Bar — The status bar at the bottom of the Data Igloo screen displays the following information:
 - User Name — The User Name of the user account currently logged in.
 - Operating System — The Operating System and service pack (if applicable).









Only users with administrative rights are allowed to use Data Igloo.



Deep Freeze Status

Deep Freeze protects a computer and restores it to the original state on reboot. Once Deep Freeze is installed on a computer, any changes made to the computer—regardless of whether they are accidental or malicious—are never permanent. For more information on Deep Freeze visit <http://www.faronics.com/deepfreeze>.

The following Deep Freeze status are displayed on Data Igloo:

Icon	Definition
	Deep Freeze Status is Frozen — Changes made to the computer will be lost when the computer is restarted.
	Deep Freeze Status is Thawed — Changes made to the computer will be retained even after the computer is restarted.
	Deep Freeze not installed — Deep Freeze is not installed on this computer.
	Deep Freeze Seed installed — Deep Freeze seed is installed on this computer.
	Deep Freeze is Thawed and Locked — Deep Freeze is Thawed and the keyboard and mouse are disabled.
	Deep Freeze Workstation Task is in progress.



ThawSpace

ThawSpace is a feature of Deep Freeze. ThawSpace is a virtual partition that can be used to store programs, save files, or make permanent changes. All files stored in the ThawSpace are retained after a restart, even if the computer is Frozen.

A ThawSpace must be created in Deep Freeze before saving data.

Data Igloo allows you to redirect the User Profile and specific Folders to a ThawSpace or physical NTFS partitions or volumes. Deep Freeze allows you to create Hidden ThawSpaces. For more information on the process to hide or display a ThawSpace refer to [Appendix A, Redirecting to Hidden ThawSpaces](#).



User Profile Redirection

The User Profile Redirection feature redirects the entire user profile to any NTFS volume or partition on the computer. This is useful if Deep Freeze is installed, in order to retain new or modified user data like Internet Favorites, My Documents and Desktop information even after reboot.



It is not possible to redirect the profile of the user currently logged in.

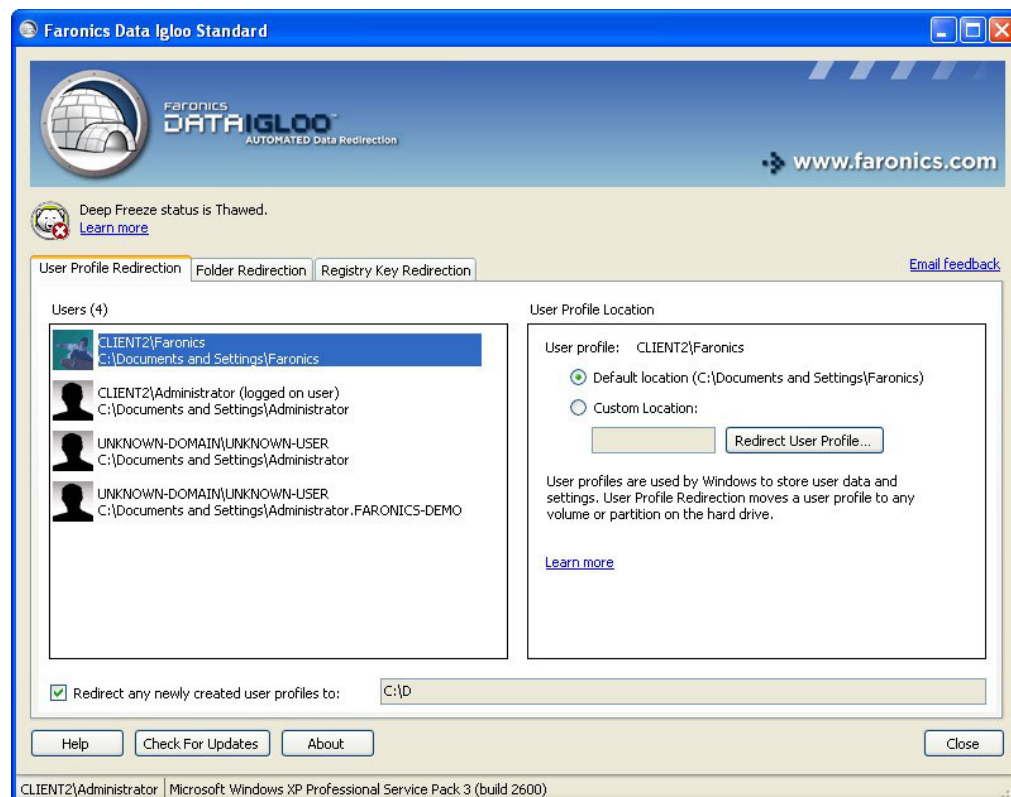


Both the source and target drives must be NTFS partitions.



If an error occurs during the redirection process, Data Igloo will revert to the original state without any changes to the data or settings.

The *User Profile Redirection* tab is displayed as follows:

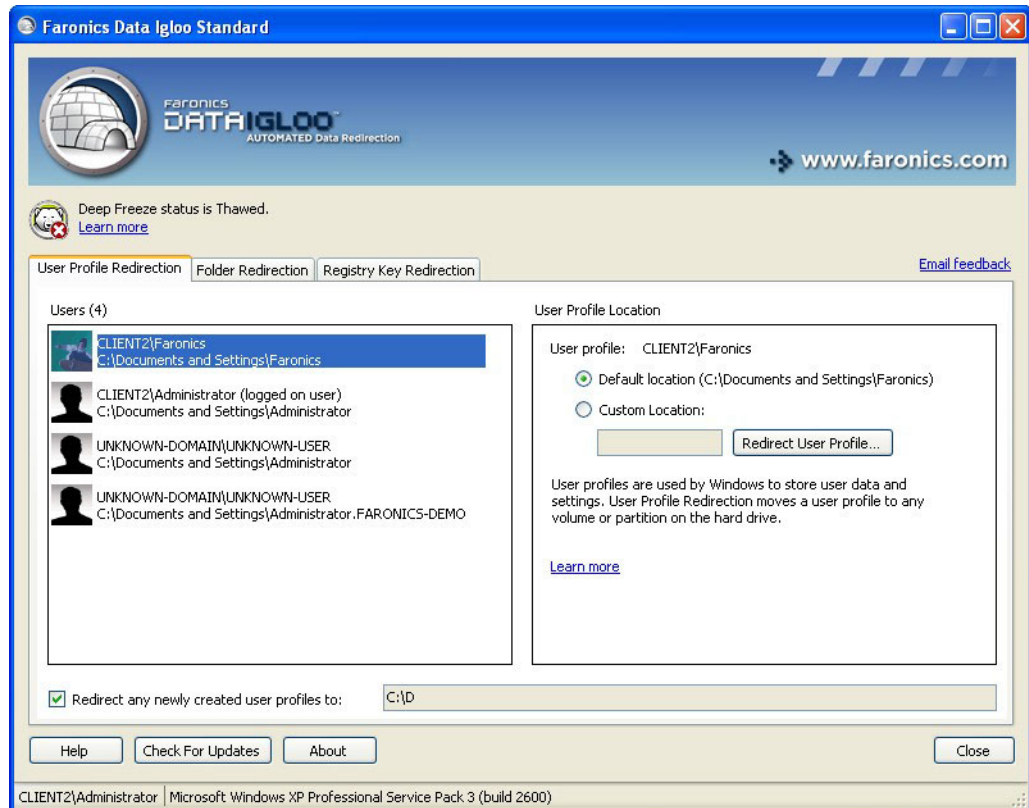




Creating a User Profile Redirection (for Existing User Profiles)

Complete the following steps to redirect a user profile from the default location to another drive on your computer:

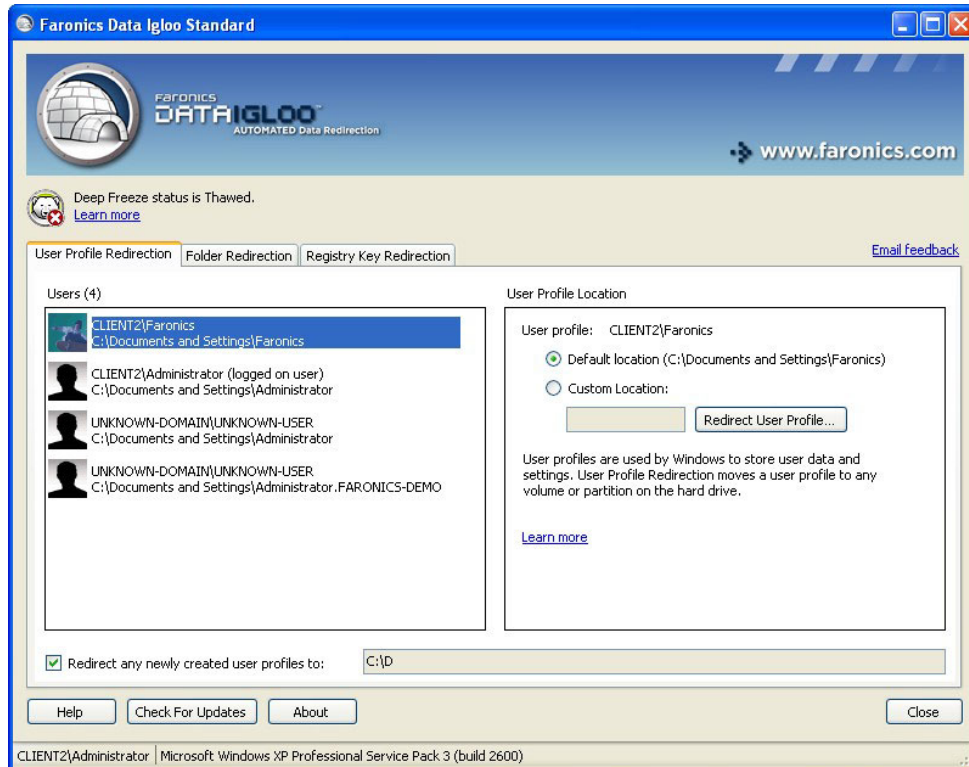
1. Ensure the Deep Freeze status is *Thawed*.
2. Select the user from the *Users* pane.
3. This step is optional. Select the *Redirect any newly created user profiles to:* checkbox to redirect newly created user profiles to a ThawSpace. Browse to select the location of the ThawSpace. If a new user profile is created, it will automatically be redirected to the selected location.



Selecting the *Redirect any newly created user profiles to:* checkbox automatically selects the *Redirect registry key changes to:* checkbox in the *Registry Key Redirection* tab. For more information, refer to [Registry Key Redirection](#).



4. In the *User Profile Location* pane select *Custom Location*. Click *Redirect User Profile...* to select the location.



5. The *Redirect User Profile* dialog is displayed with the *Source* auto-filled. This is a read-only field and cannot be edited.



6. Click *Browse* for the *Target*. Select the target folder in the *Browse for folder* dialog.

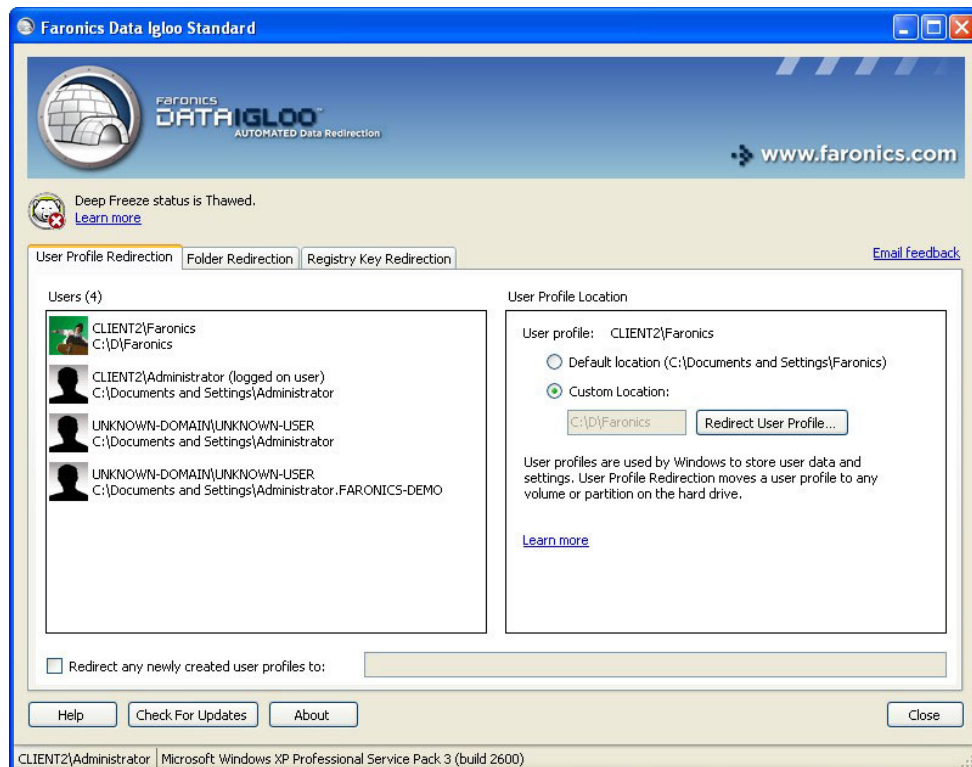




Alternatively, you can type the folder path in the Target field.



- Select the *Copy NTFS permissions (where applicable)* checkbox to copy the permissions for NTFS. The security applied to Source folder by the NTFS file system is copied to the Target folder. The security and share permissions are also applied to the files and folders within the Target folder.
 - Select the *Copy Share permissions (where applicable)* checkbox to copy the Share permissions for the user profile folder.
7. Click *Redirect User Profile*.
 8. Data Igloo scans the files and if errors occur, it is displayed in the Error Dialog. For more information about the Error Dialog refer to [Data Igloo Error Dialog](#). If no error is displayed, a progress bar is displayed and the User Profile is redirected to the target location.





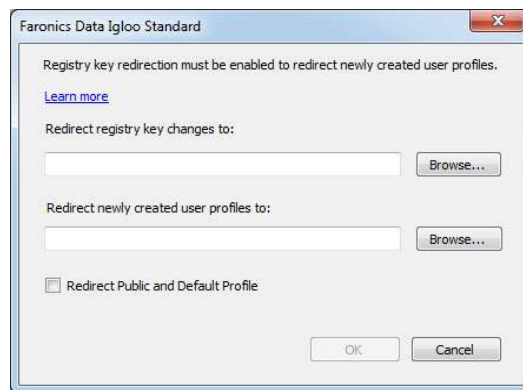
If Deep Freeze status is *Frozen*, you can still redirect a User Profile. The files and folders related to the User Profile will be successfully moved even when the Deep Freeze status is *Frozen*. However, the User Profile Redirection will not be retained when the computer is restarted.

Automatically Redirecting Newly Created User Profiles

Data Igloo provides an option to automatically redirect newly created user profiles. This feature saves time and effort for the administrator by ensuring that all newly created user profiles are redirected to the selected location automatically.

Complete the following steps to automatically redirect newly created user profiles:

1. Go to User Profile Redirection tab.
2. Select the *Redirect any newly created user profiles to:* checkbox to redirect newly created user profiles to a ThawSpace.



- *Redirect registry key changes to* – Click *Browse* to select the location of the ThawSpace. Alternatively, you can type the folder path in the Target field. Changes to the registry are automatically redirected to the selected location.
- *Redirect newly created user profiles to* – Click *Browse* to select the location of the ThawSpace. Alternatively, you can type the folder path in the Target field. If a new user profile is created, it will automatically be redirected to the selected location.
- *Redirect Public and Default Profile* – Select this option to redirect public and default profiles to the selected location.

By default, this box is unchecked.

3. Click *OK*.

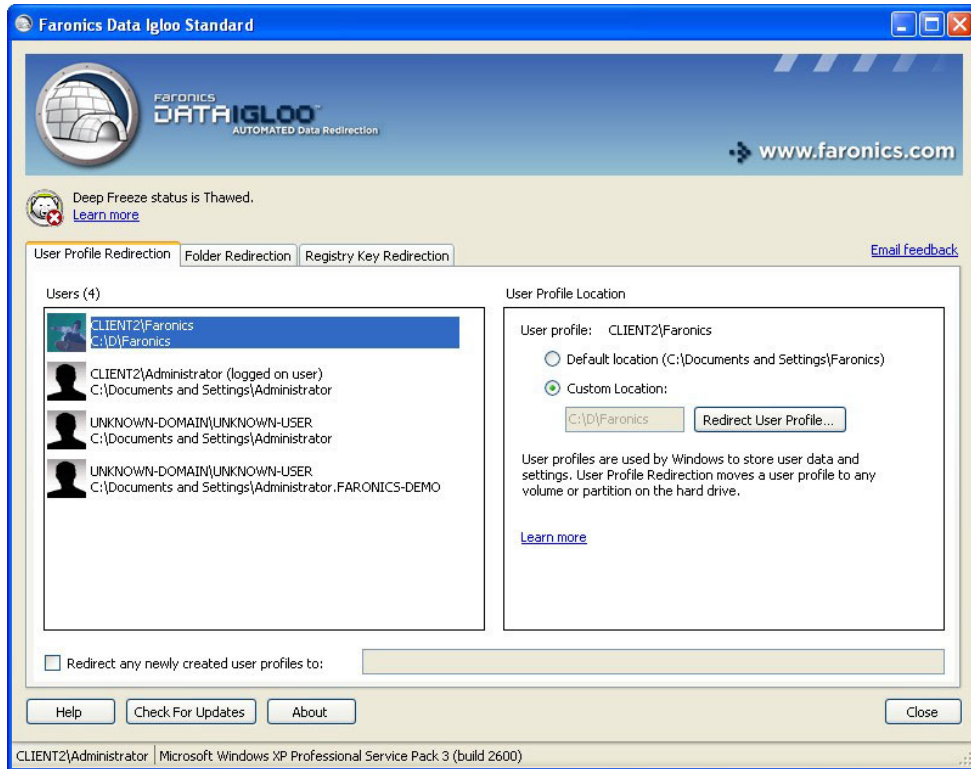
Removing a User Profile Redirection

Complete the following steps to remove a previously redirected User Profile on your computer:

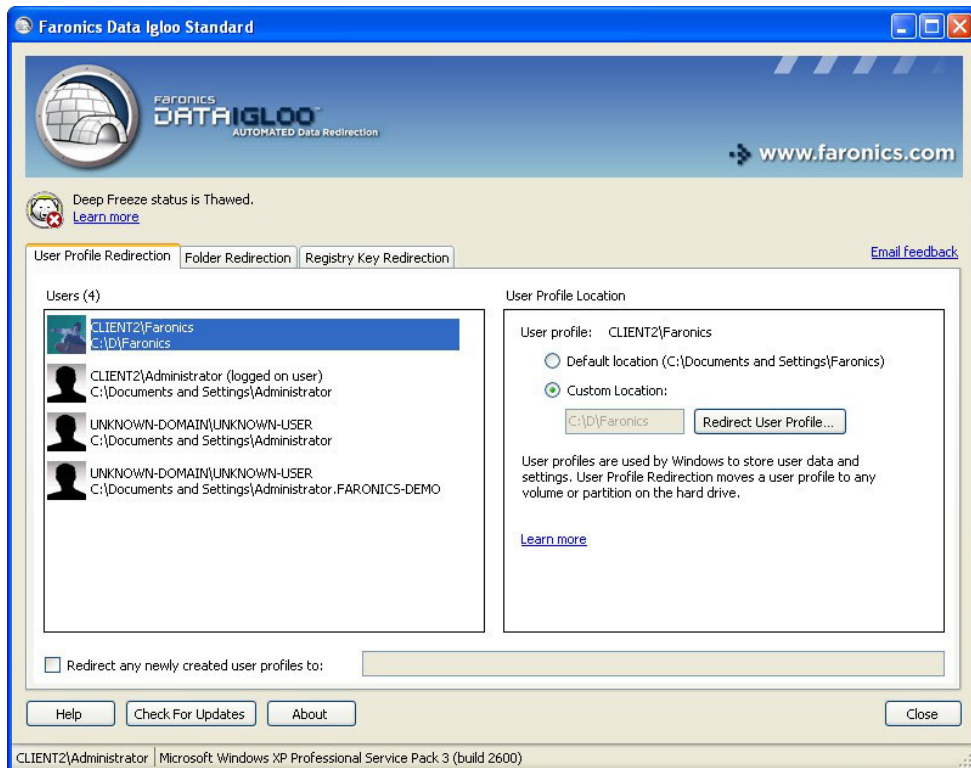
1. Ensure the Deep Freeze status is *Thawed*.



2. Select the user profile from the *Users* pane for which the user profile redirection is to be removed.

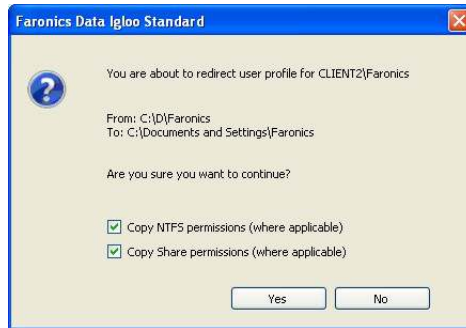


3. In the *User Profile Location* pane select *Default Location*.





4. A dialog is displayed showing the current and target location for the User Profile. Click Yes.



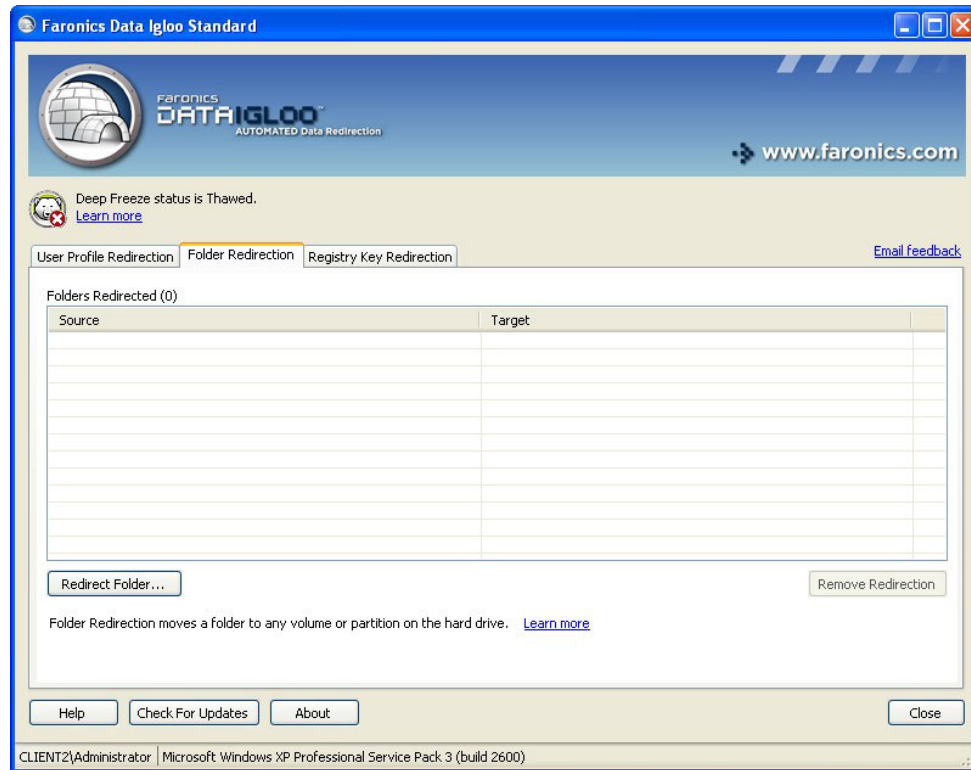
5. A progress bar is displayed and the User Profile redirection is removed.



Folder Redirection

The *Folder Redirection* feature moves a folder to any NTFS volume or partition on the computer. This is useful when Deep Freeze is installed. This feature ensures that data in a folder on a *Frozen* drive is always saved on the *Thawed* drive, thereby retaining the data during a reboot.

The *Folder Redirection* tab is displayed as follows:



Data Igloo does not allow redirecting to or from Windows system folders and Program Files or to any subfolder within these folders.



Both the source and target drives must be NTFS partitions.



If an error occurs during the redirection process, Data Igloo will revert to the original state without any changes to the data or settings.



Example

If you have installed Deep Freeze on your computer running Windows XP and if C: is Frozen, the files saved in the *My Documents* folder are erased on reboot. To avoid such a situation, you can redirect the *My Documents* folder to a Thawed partition using Data Igloo.

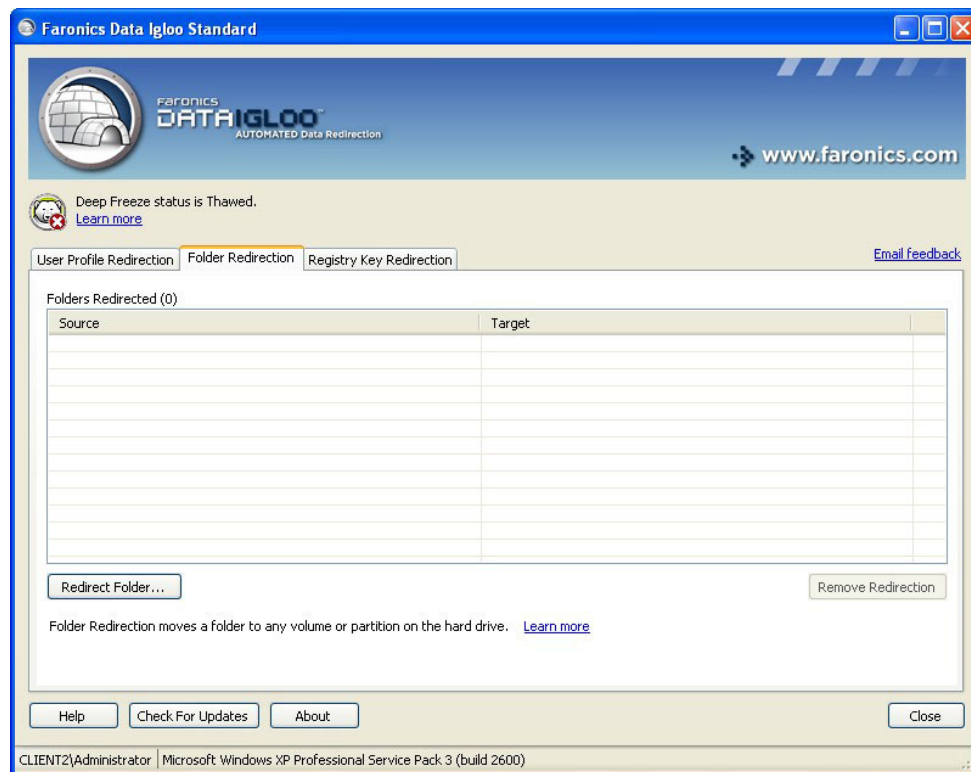
Perform the following steps:

1. Reboot the computer in a *Thawed* state.
2. Redirect *C:\Documents and Settings\<User Name>\My Documents* to the ThawSpace *T:.*
3. Reboot the computer in a *Frozen* state.

Creating a new Folder Redirection

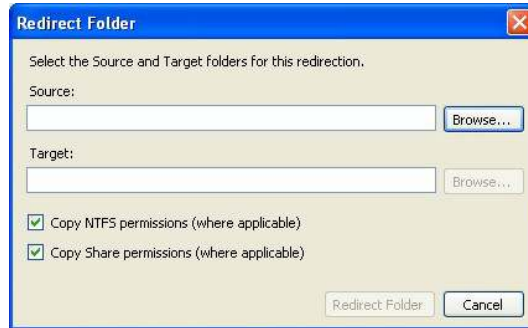
Complete the following steps to redirect a folder to another location on your computer:

1. Ensure the Deep Freeze status is *Thawed*.
2. Go to *Folder Redirection* tab. Click *Redirect Folder...*





3. In the *Redirect Folder* dialog, click *Browse* to select the source folder.



- Select the *Copy NTFS permissions (where applicable)* checkbox to copy the permissions for NTFS. The security applied to Source folder by the NTFS file system is copied to the Target folder. The security and share permissions are also applied to the files and folders within the Target folder.
- Select the *Copy Share permissions (where applicable)* checkbox to copy the share permissions for the folder.



The compression and encryption attributes of the folders and the files within the folders are not copied.

4. Select the source folder in the *Browse for folder* dialog and click *OK*.

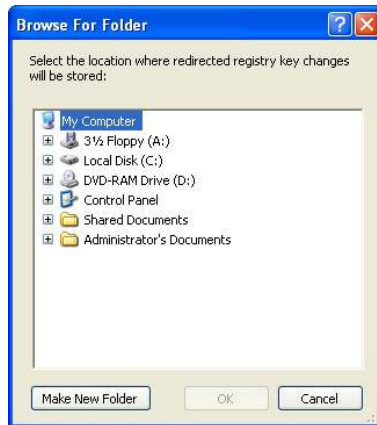


5. In the *Redirect Folder* dialog, click *Browse* to select the target folder. Alternatively, you can type the folder path in the Target field.

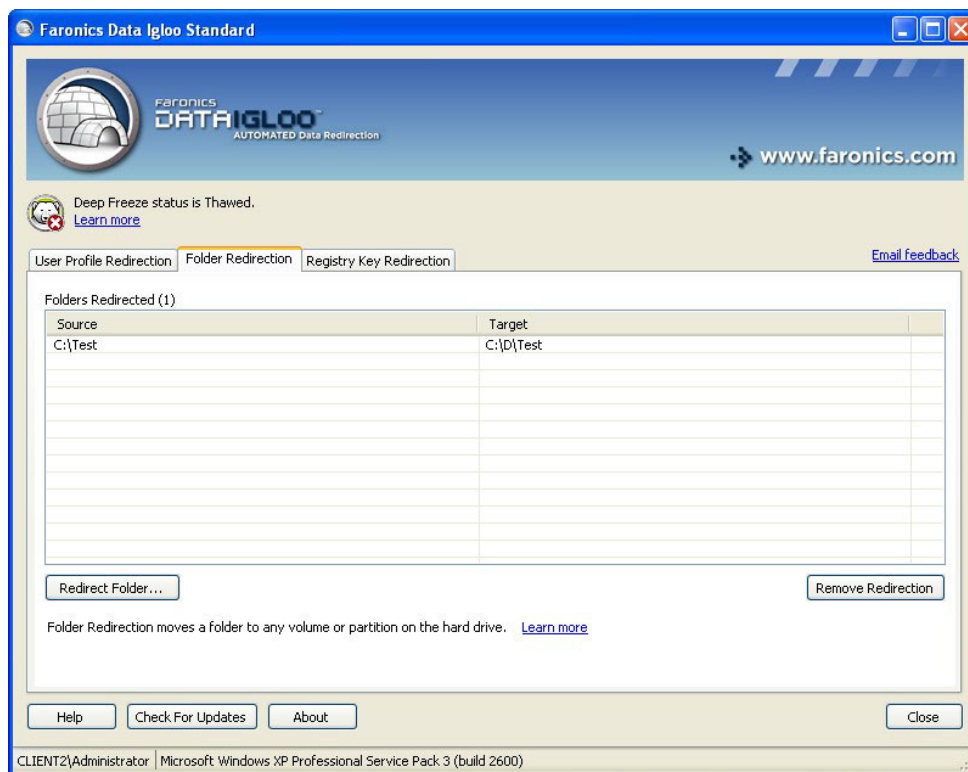




6. Select the target folder in the *Browse for folder* dialog and click *OK*.



7. Click *Redirect Folder*.
8. A progress bar is displayed and the folder is redirected.



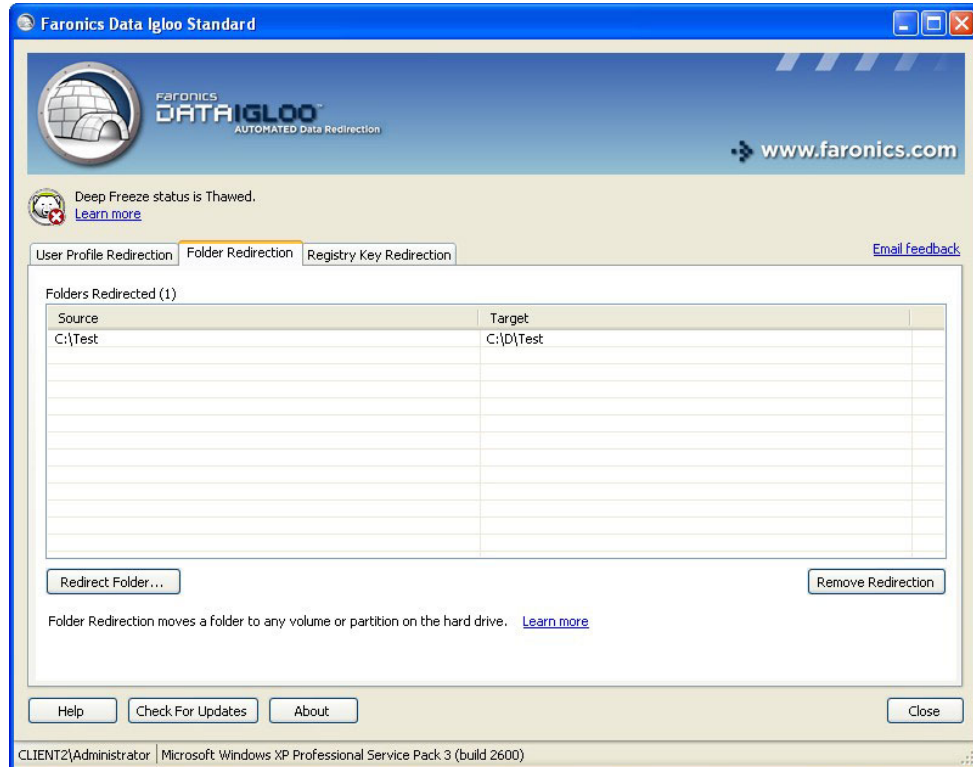
The folder redirected to the target drive will inherit the permissions from its parent folder.



Removing a Folder Redirection

Complete the following steps to remove a previously redirected folder on your computer:

1. Ensure the Deep Freeze status is *Thawed*.
2. Go to *Folder Redirection* tab.
3. The list of folders currently redirected is displayed. Select the Folder Redirection to be removed and click *Remove*.



4. A configuration dialog is displayed displaying the current and target location of the folder. Click *Yes* to continue.



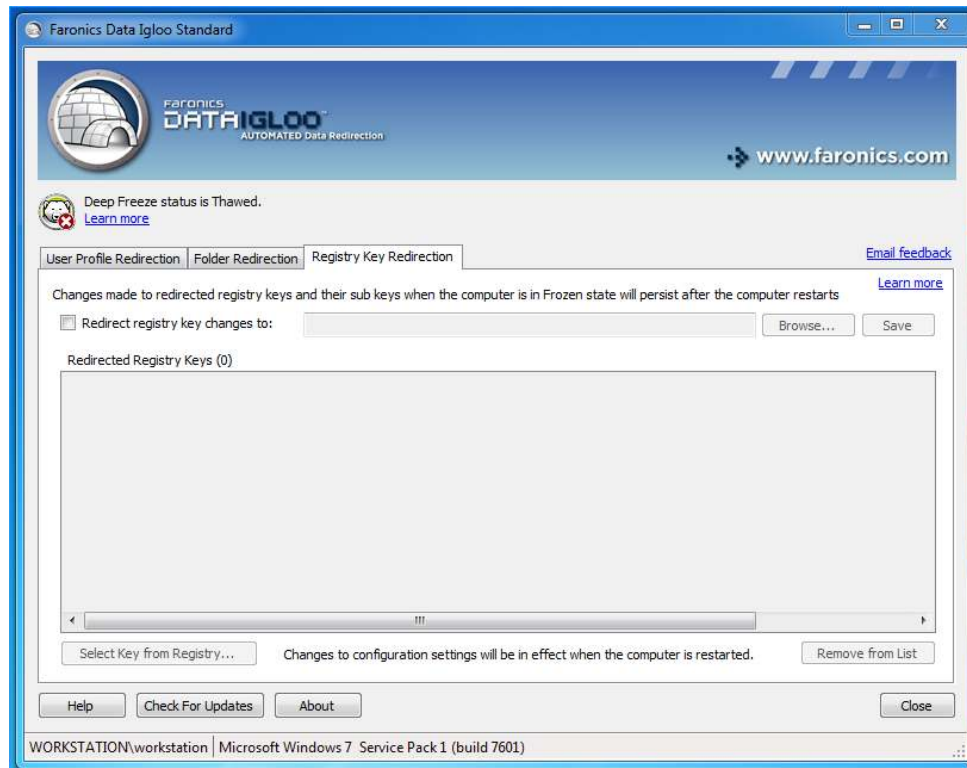
5. The folder redirection is removed.



Registry Key Redirection

The Registry Key Redirection tab allows you to redirect changes occurring in selected registry keys to a ThawSpace. This ensures that the changes to the registry key are retained even when the Deep Freeze status is Frozen. When Deep Freeze status is Thawed, the changes to the registry keys saved on the ThawSpace are automatically restored to the registry.

The Registry Key Redirection tab is displayed as follows:



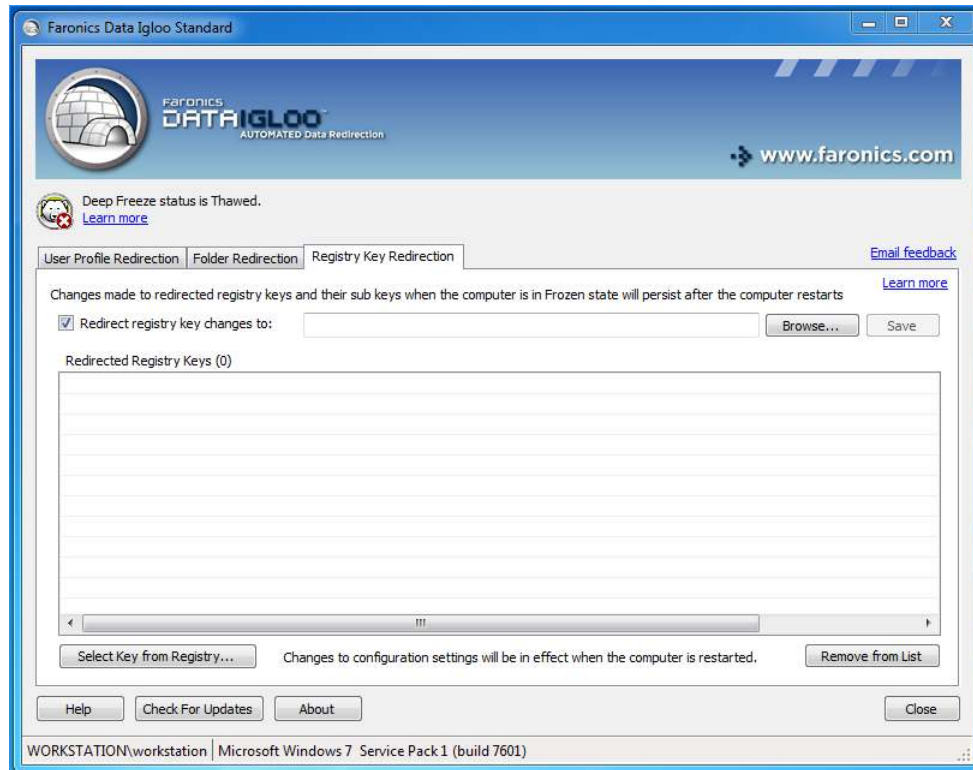
Only the `HKEY_LOCAL_MACHINE` registry keys can be redirected using Data Igloo.



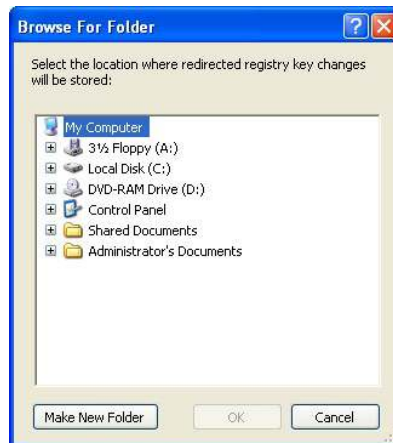
Creating a Registry Key Redirection

Complete the following steps to create a Registry Key Redirection:

1. Ensure the Deep Freeze status is *Thawed*.
2. Go to *Registry Key Redirection* tab. Select *Redirect registry key changes to:* checkbox.

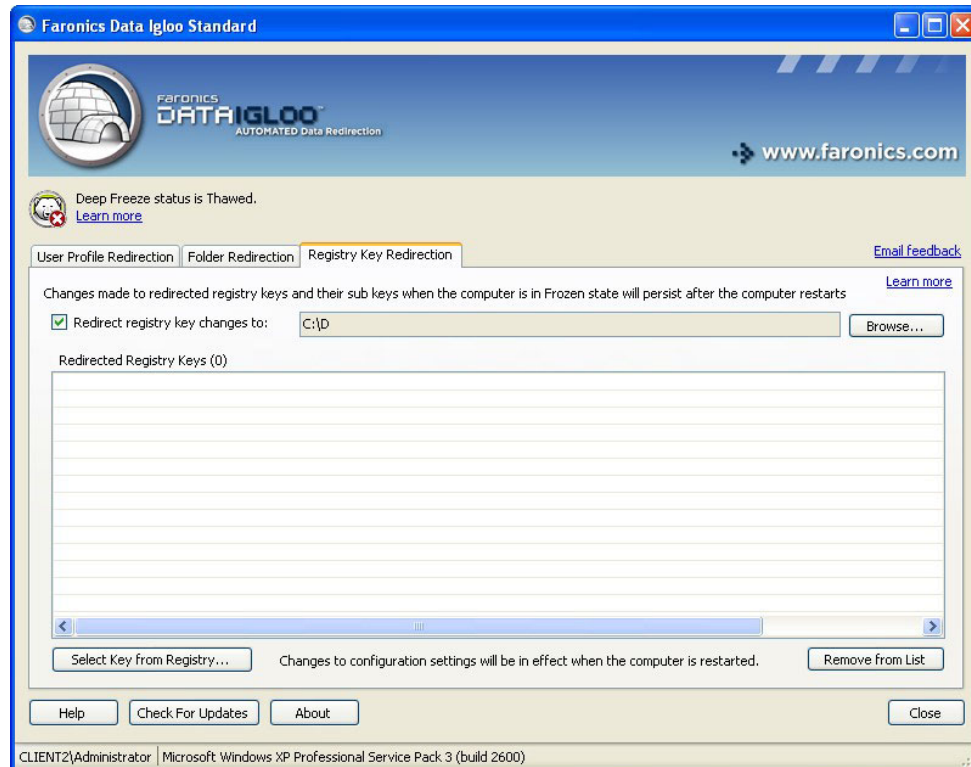


3. Click *Browse* to select a location on a Thawed drive.





4. Click *Select Key from registry...*

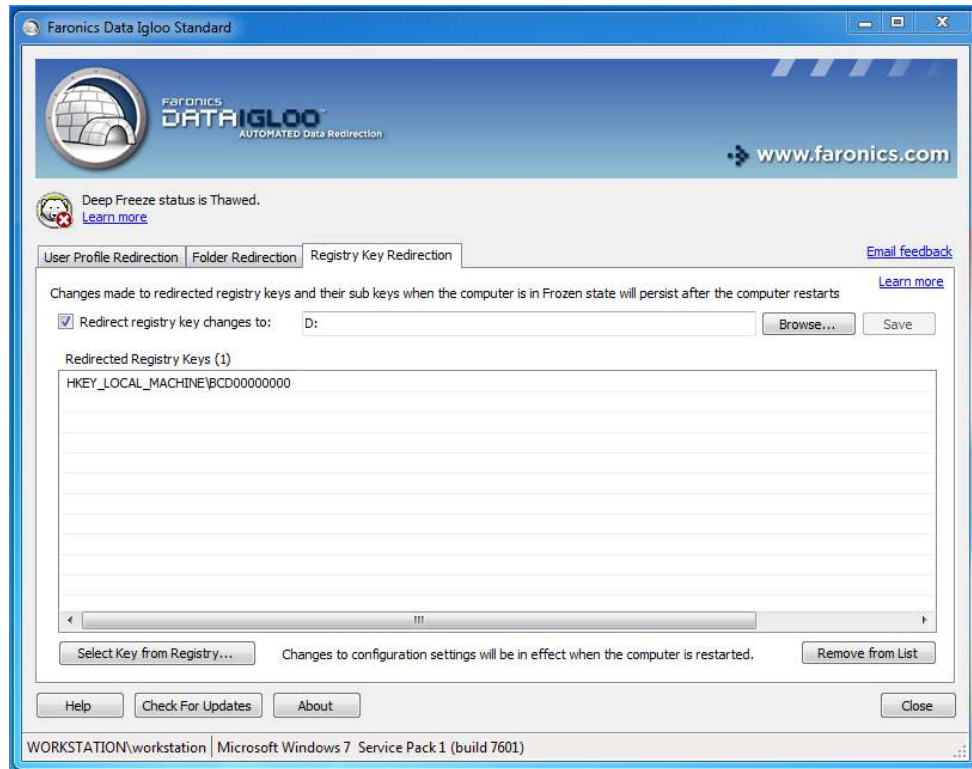


5. In the *Browse For Registry Key* dialog, select the registry key and click *Redirect*.





6. The registry key is redirected to the Thawed drive.



7. Reboot the computer *Frozen*.



Changes made to the configuration are applied only when the computer restarted. Registry key redirection takes effect only when the computer is rebooted *Frozen*.



Select the specific registry key to be redirected. Selecting the parent registry key removes the child registry key from the list.



Deep Freeze status must be Thawed to change the settings in the Registry Key Redirection tab. Registry key redirection can also be enabled when the Deep Freeze status is Frozen. However, registry key redirection will not take effect when the computer is rebooted.



The registry keys that are grayed out cannot be redirected.

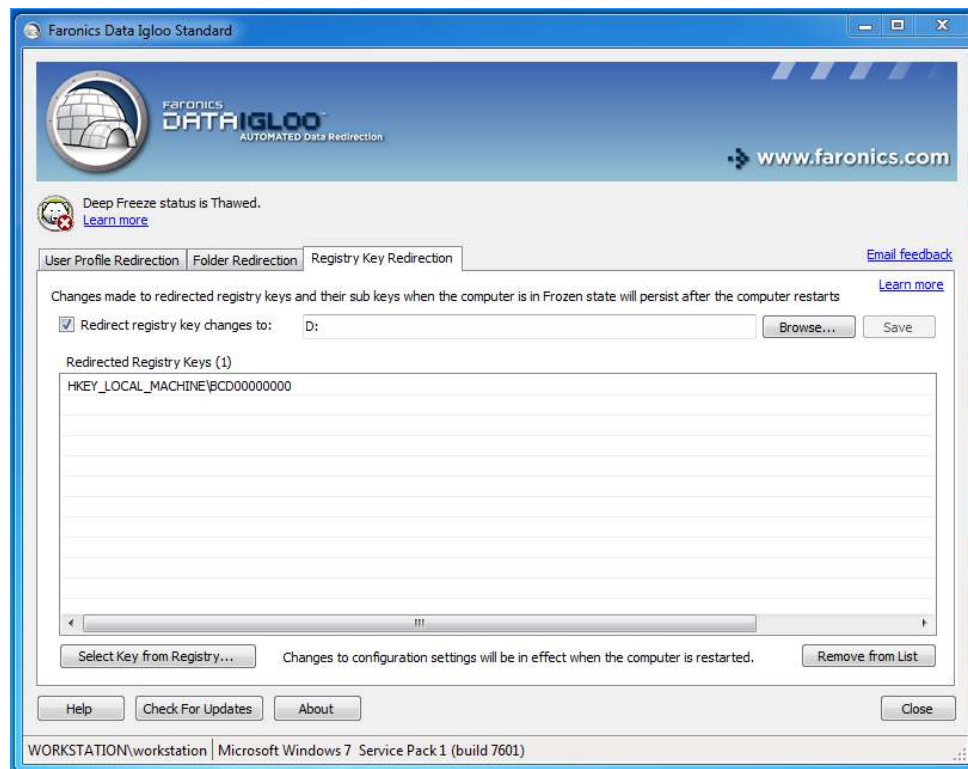


Some Registry Keys might automatically appear in the Registry Key Redirection tab. These Registry Keys are used by Data Igloo and cannot be removed manually.

Removing a Registry Key Redirection

Complete the following steps to remove Thawed registry keys:

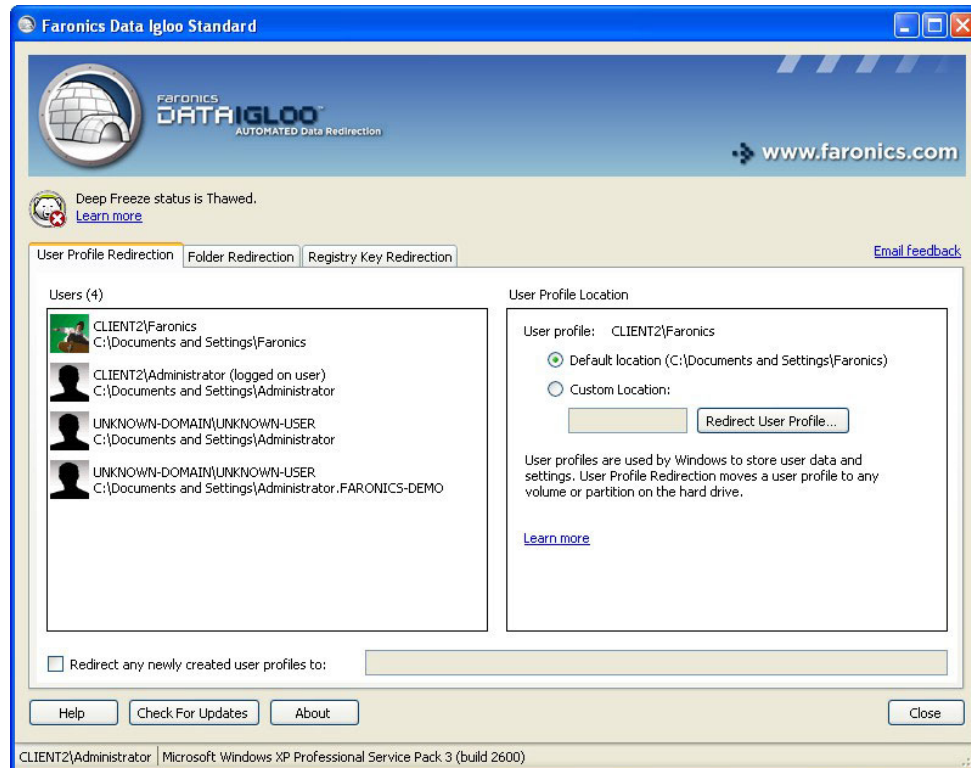
1. Ensure the Deep Freeze status is *Thawed*.
2. Go to *Registry Key Redirection* tab.
3. Select the registry key from the list and click *Remove from list*.





Closing Data Igloo

Click *Close* icon on the title bar to close Data Igloo. Alternatively, click the *Close* button.





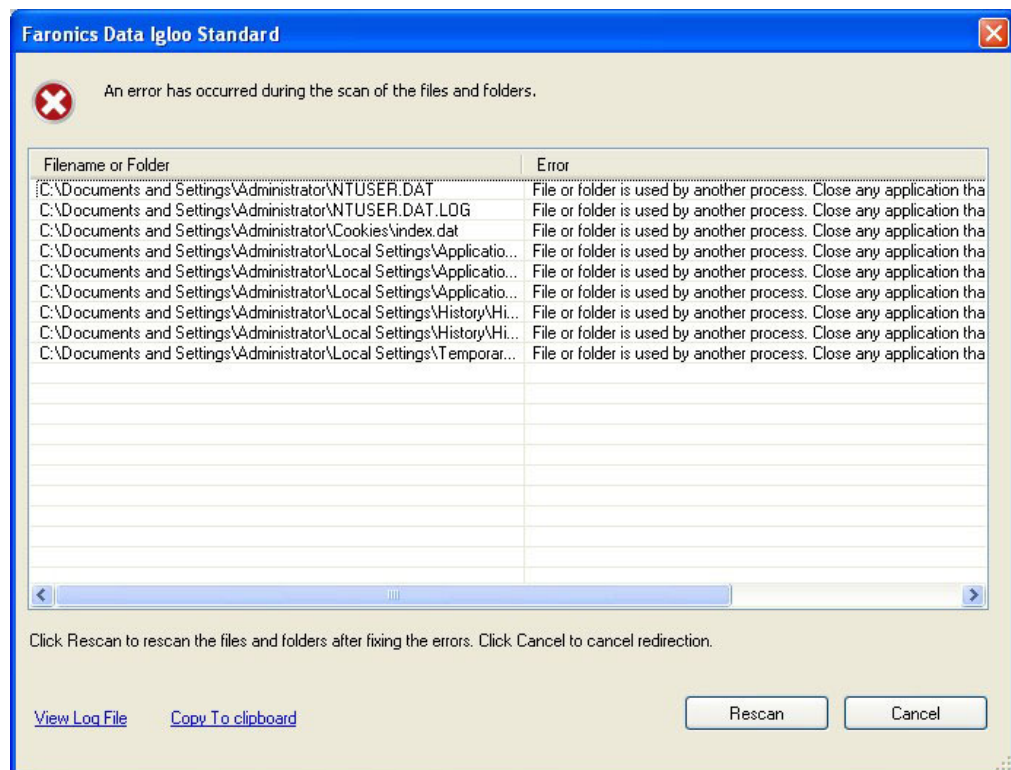
Logging Events in Data Igloo

Data Igloo provides two ways to log and view the events. The Data Igloo error dialog and the Log File. The Log File logs events for actions performed by Data Igloo.

Data Igloo Error Dialog

The Data Igloo error dialog is displayed whenever there is an exception. The dialog displays the following options:

- Click *View Log File* to view the log file.
- Click *Copy to clipboard* to copy the contents displayed in the error dialog to the clipboard. The contents can then be pasted in a word processor or E-mail.
- Click *Rescan* to scan the action again and refresh the error dialog.
- Click *Cancel* to cancel the dialog.



Data Igloo Log File

To view the events logged in the log file, complete the following steps:

1. Go to *C:\Program Files\Faronics\Data Igloo Standard*.
2. Double-click *Data Igloo.txt*.
3. The events are displayed in the log file.



Command Line

Data Igloo has the following command line options.

Syntax:

IGC.exe/ [Command]

List of commands available in Data Igloo:

Command	Description
Faronics_IGS.exe /s /v/qn	Silent Install.
Faronics_IGS.exe /s /x /v/qn	Silent Uninstall.
h help	Displays the Help about all the supported commands.
ver version	Displays the version of Data Igloo Command Line tool.
GetDFStatus	Displays the current status of Deep Freeze (Frozen or Thawed).
CheckForUpdate	Checks if a new version of Data Igloo is available.
AutoRedirectUP </loc:><path> AutoRedirectUP </loc:><path> /RedirectDefaultandPublicProfile AutoRedirectUP [/d]	Automatically Redirect User Profiles to the specified path.
RedirectUP <hostname\username> </loc:><newpath> [/Share /-Share] [/NTFS /-NTFS]	Redirects user profiles to the specified location.
RedirectUPDefault <username> [/Share /-Share] [/NTFS /-NTFS]	Redirects the specified profiles to the default location. [/Share] and [/NTFS] switches in the command are optional. Even if these switches are not provided in the command, the behavior is the same as if they were provided.



Command	Description
<pre>RedirectFolder <source> </loc:><target> </loc:><target> [/NTFS /-NTFS] [/Share /-Share] RedirectFolder <source> </loc:><target> [/d]</pre>	Redirects the specified folder to a new destination. [/Share] and [/NTFS] switches in the command are optional. Even if these switches are not provided in the command, the behavior is the same as if they were provided.
<pre>RedirectRegKeyLocation </loc:><location> RedirectRegKeyLocation [/d]</pre>	Sets a Location for all the subsequent RedirectRegKey operations.
<pre>RedirectRegKey <RegKeyPath> RedirectRegKey <RegKeyPath> [/d]</pre>	Redirects contents of a specified Registry Key to a location as defined by the RedirectRegKeyLocation command.

Argument/Switch:

<username> the username on the computer for the specified user.

<hostname> the Domain name/Host name.

</loc:> the name of the drive or volume. For example, it may be D: (drive) or volume name.

<source> the name of the source folder that is to be redirected.

<target> the target name of the folder.

<location> location in the registry.

<RegKeyPath> the path of the registry key in the registry.

[NTFS] copies the folder permissions to target.

[Share] copies the sharing permissions and properties of the folder to the target.

[-NTFS] does not copy the folder permissions to target.

[-Share] does not copy the sharing permissions and properties of the folder to the target.

[d] reverse the action when used with the particular command.

Examples

To redirect the user profile for John to E: drive, you can use the following syntax:

```
IGC.exe /RedirectUP FARONICS\john /loc:E:\user
```

To redirect the folder C:\Documents to E: drive, you can use the following syntax:

```
IGC.exe /RedirectFolder C:\Documents /loc:E:\
```





Uninstalling Data Igloo

This chapter describes how to uninstall Data Igloo.

Topics

[Uninstalling Data Igloo with the Installer](#)

[Uninstalling Data Igloo via Add or Remove Programs in Windows](#)



Uninstalling Data Igloo with the Installer

Complete the following steps to uninstall Data Igloo:

1. Double-click *Faronics_IGS.exe*. Click *Next*.

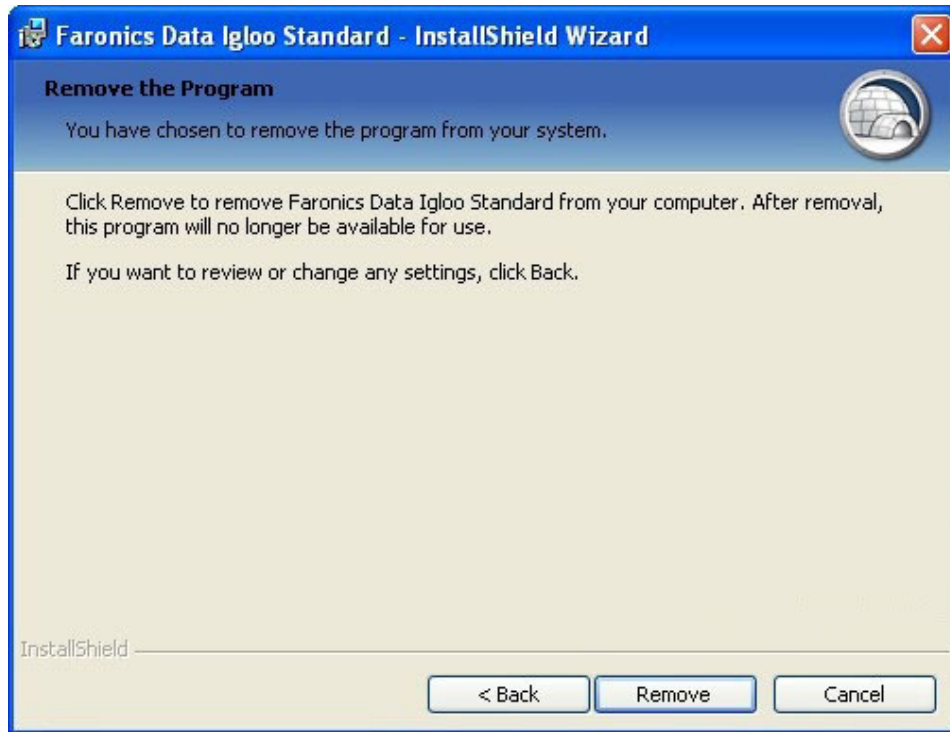


2. Select *Remove*. Click *Next*.





3. Click *Remove*.



4. Data Igloo is removed from your computer. Click *Finish* to complete uninstallation.





Uninstalling Data Igloo via Add or Remove Programs in Windows

Complete the following steps to uninstall Data Igloo via *Add or Remove Programs* in Windows:

1. Click *Start > Control Panel > Add or Remove Programs*.
2. Select *Data Igloo*.
3. Click *Remove*.



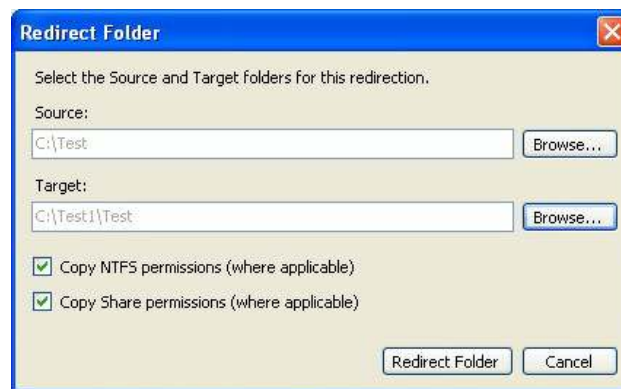
Appendix A Redirecting to Hidden ThawSpaces

ThawSpace is a virtual partition that can be used to store programs, save files, or make permanent changes. All files stored in the ThawSpace are retained after a restart, even if the computer is Frozen.

Deep Freeze allows you to create Hidden ThawSpaces. Hidden ThawSpaces are not visible in Windows Explorer. However, Hidden ThawSpaces can be accessed via *Start > Run > [Drive Letter]*.

Ensure the Deep Freeze status is *Thawed* before creating a Folder Redirection via Data Igloo.

If you know which ThawSpaces are Hidden, you can follow the steps in [Creating a new Folder Redirection](#) and type the folder path in the Target field to redirect folders to Hidden ThawSpaces



If you do not know which ThawSpaces are Hidden, you need to set the Hidden ThawSpaces to Visible before performing folder redirection using the *Browse* button in Data Igloo.

Complete the following steps to set the Hidden ThawSpaces to Visible:

1. Open Deep Freeze on your workstation.
2. Go to the ThawSpace tab.
3. Select the checkbox for the drive letter that is not currently visible in Windows Explorer.
4. Click OK.
5. Log out then log in again or restart the computer.

After the ThawSpaces become visible in Windows Explorer, click the *Browse* button in Data Igloo to select the folder in the *Browse for folder* dialog, and follow the steps in [Creating a new Folder Redirection](#).

Once the Folder Redirection is complete, you can set ThawSpaces to be hidden again. To set ThawSpaces to Hidden, complete the following steps:

1. Open Deep Freeze on your workstation.



2. Go to the ThawSpace tab.
3. Clear the checkbox for the drive letter that is currently visible in Windows Explorer.
4. Click OK.
5. Log out then log in again or restart the computer.



Best Practices for Installing Using Imaging

Prerequisites: You must know about imaging using Sysprep before running this example. For more information, refer to

[http://technet.microsoft.com/en-ca/library/cc766049\(v=ws.10\).aspx](http://technet.microsoft.com/en-ca/library/cc766049(v=ws.10).aspx).

Imaging workstations is one of the quickest ways to deploy workstation software and operating system settings to multiple workstations. Creating specialized image for single computer and reimaging it is a straightforward process, since it does not require any steps to re-configure the system. However, in enterprise environments, the master image is intended for deployment on multiple computers and has to be configured or generalized in order to remove system specific information, such as computer name, user SID etc. The master image is usually customized with certain system configuration and installed software. Below is the recommended way of creating customized master image with Deep Freeze and Data Igloo installed.

1. Using Windows System manager in *WindowsAIK*, customize the .xml answer file for unattended Windows installation.
2. Install fresh Windows system on reference computer.
3. Press *Ctrl-Shift-F3* to reboot the system into Audit mode before creating user name on freshly installed system. Alternatively, to create users on master image, finalize Windows installation, create all required users and reboot system into Audit mode using Windows SysPrep utility. This will reboot the system into Audit mode, where the system can be further customized.
4. In the Audit mode, perform all required customizations and software installations. This includes Deep Freeze workstation and Data Igloo. At this point, do not configure Data Igloo to redirect users, folders and registry.
5. This step is only to configure all the required scripts. Create all required scripting solutions and configure Windows SysPrep which will run the unattended installation. Configure scripts to automatically run on first reboot after deploying the image. The scripts can be configured to perform drive letter re-assignment as well as scripting using the Data Igloo command line tool *IGC.exe*. The scripts can be configured to perform user, folder, and registry redirections. This will ensure the newly imaged system will automatically perform all required customizations, which were not possible to make within master image.
6. Set the *Clone flag* in Deep Freeze workstation configuration. This will ensure Deep Freeze will start up in Thawed mode on newly imaged system. Therefore, all the customizations will be permanently retained.
7. Run the Sysprep utility with *Out of the Box experience*, *Generalize* and *Shutdown* option. This will generalize the system on reference computer and automatically shut it down.



8. Capture the image of the reference computer using any disk imaging tool. This will create a generalized master image, which can be further deployed on multiple computers.



Do not configure Data Igloo before generalizing the reference image since the Thawed Users and Folders may become inaccessible and it might lead to incorrect monitoring of Thawed Registries. Redirecting Folders or Registry Keys before imaging may lead to broken junction links during imaging.



Appendix C Example User Profile Redirection to a Real Partition

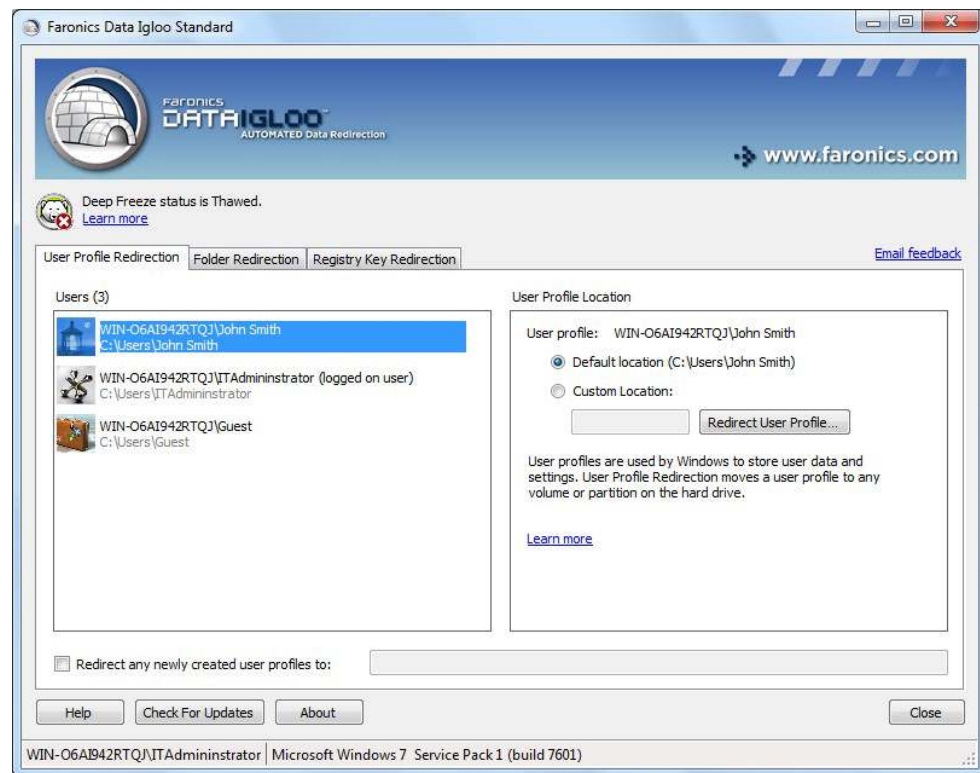
This example explains how to redirect the user John Smith to a real partition using Data Igloo.

If the C: drive is in a Frozen state, the user data is lost on reboot. To ensure that the user data is not lost, we can use Data Igloo to redirect the user profile to a real partition (say E: drive) that always remains Thawed.

Complete the following steps to redirect the user profile from C: drive to E: drive:

1. Install Deep Freeze on the computer. Deep Freeze Standard and Deep Freeze Enterprise (workstation) are both applicable for this example. Ensure that only C: drive stays Frozen.
2. Reboot Thawed.
3. Install Data Igloo.
4. Launch Data Igloo.

In the User Profile Redirection tab, select John Smith. Click *Custom Location* and *Redirect User Profile*.

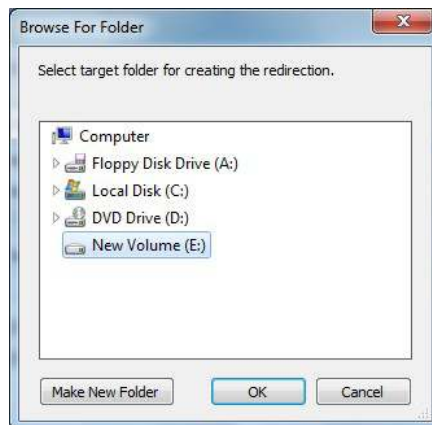




5. The Source is selected automatically (C:\Users\John Smith). Click *Browse* for the target. *Copy NTFS permissions* and *Copy Share permissions* are selected by default.



6. Select the E: drive and click OK.

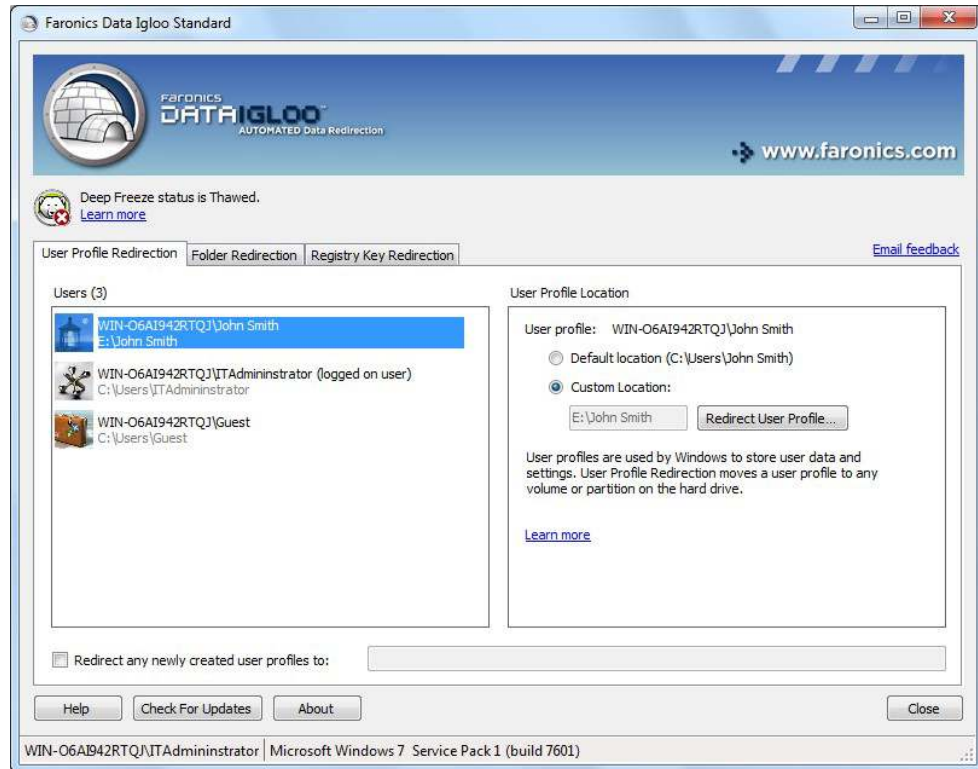


7. The location of the user profile is now selected. Click Redirect User Profile.

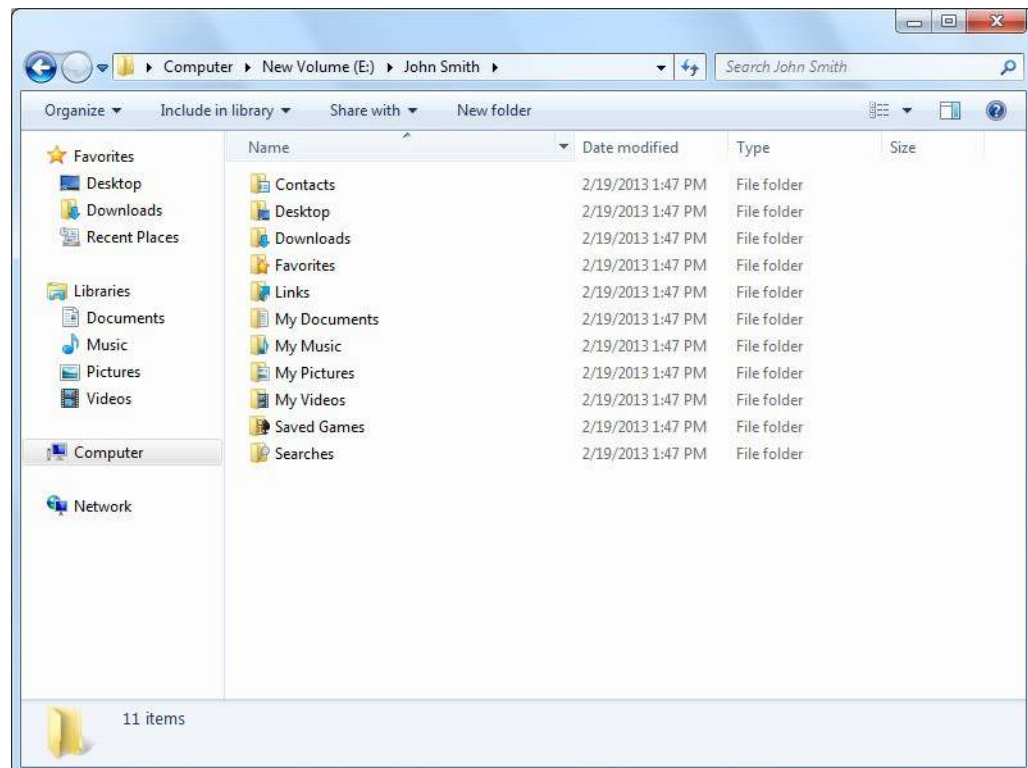




8. The user profile John Smith is now redirected to E: drive.



To check if the redirection was successful, navigate to E:/John Smith. The contents of the folder are displayed:







Appendix D Example Program Redirection to a Real Partition

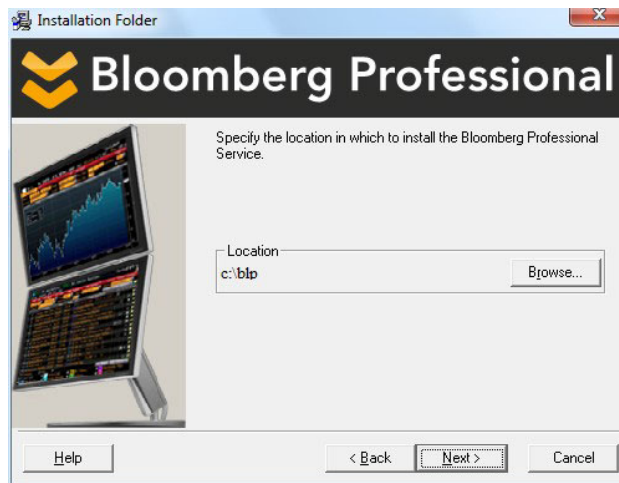
Bloomberg Professional is installed on C: drive by default. Bloomberg also saves data on the C: drive. For computers using Deep Freeze where C: drive is in a *Frozen* state by default, the data is lost on a reboot. Bloomberg can be installed on a drive other than C: drive (for example, Thawed drives like D: or E:). If there is a software update, the system files may be retained upon a reboot since they are installed on a Thawed drive. However, some software updates also update the registry keys. Since the registry keys are on C: drive, the updates are lost on reboot.

The solution to this problem is to migrate a program to a Thawed partition. Migrating a program consists of two parts:

- Folder Redirection — to redirect the files for the program to a Thawed drive.
- Registry Key Redirection — to redirect the registry key for the particular program to a non-Frozen drive.

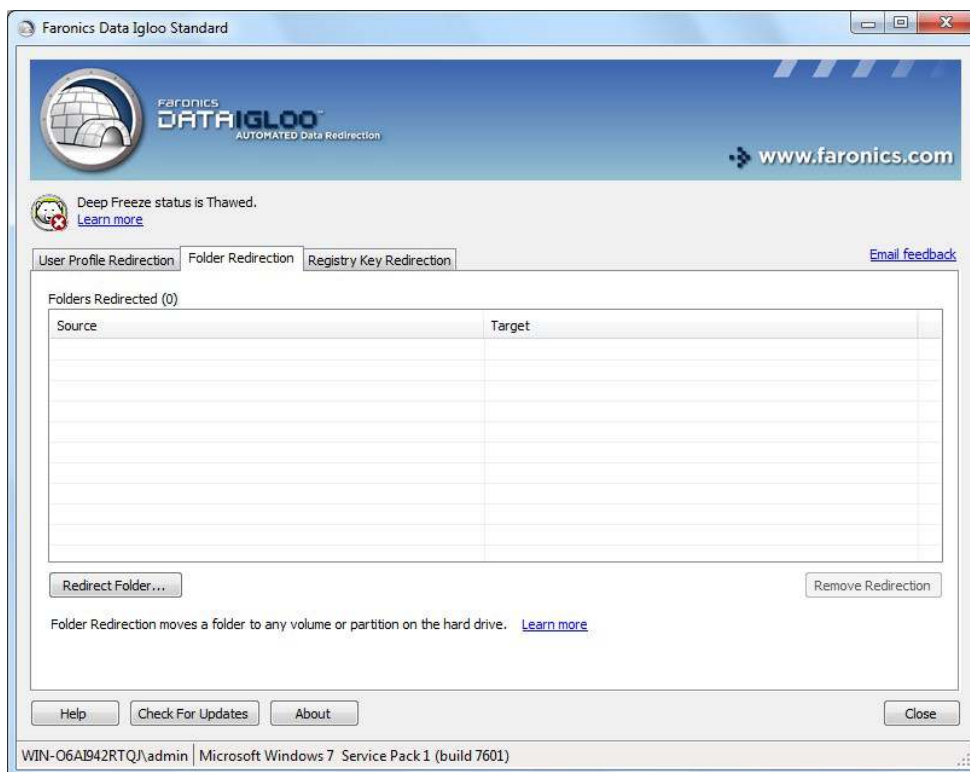
Complete the following steps to redirect a program (Folder and Registry Key) to a Thawed drive.

1. Install Deep Freeze on the computer. Deep Freeze Standard and Deep Freeze Enterprise (workstation) are both applicable for this example. Ensure that only C: drive stays Frozen.
2. Reboot Thawed.
3. Install Data Igloo.
4. Install the program that will save data on C: drive. For this example, we have chosen Bloomberg, a desktop application. Install Bloomberg in its default location. By default it is installed on C:\blp.

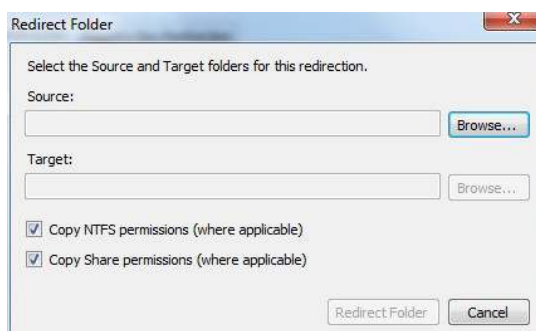




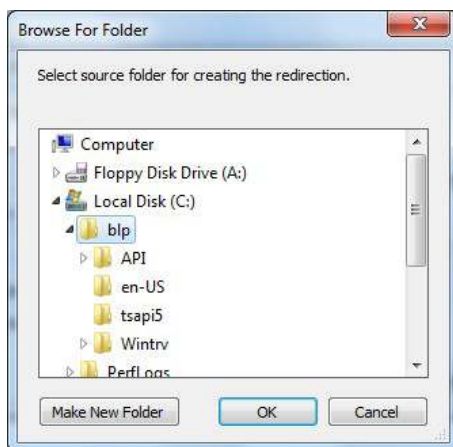
5. Launch Data Igloo and click the *Folder Redirection* tab.



6. Click *Redirect Folder*.

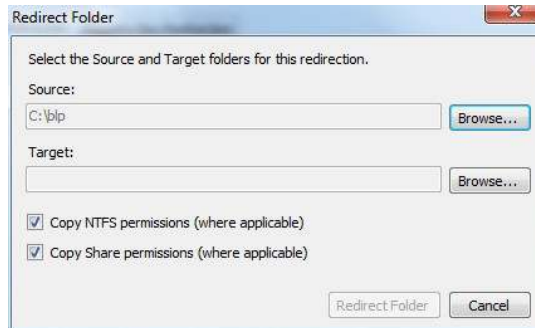


7. Browse to select *C:\blp* and click *OK*.





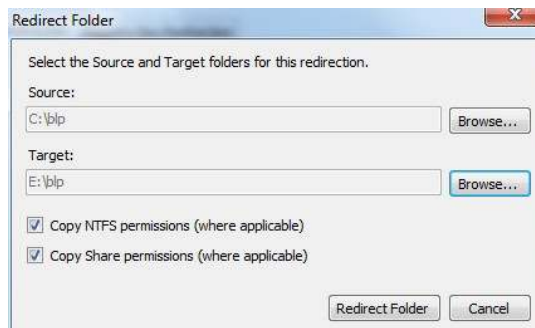
8. The source path is select. Click *Browse* for target.



9. Browse to select E: drive and click *OK*.

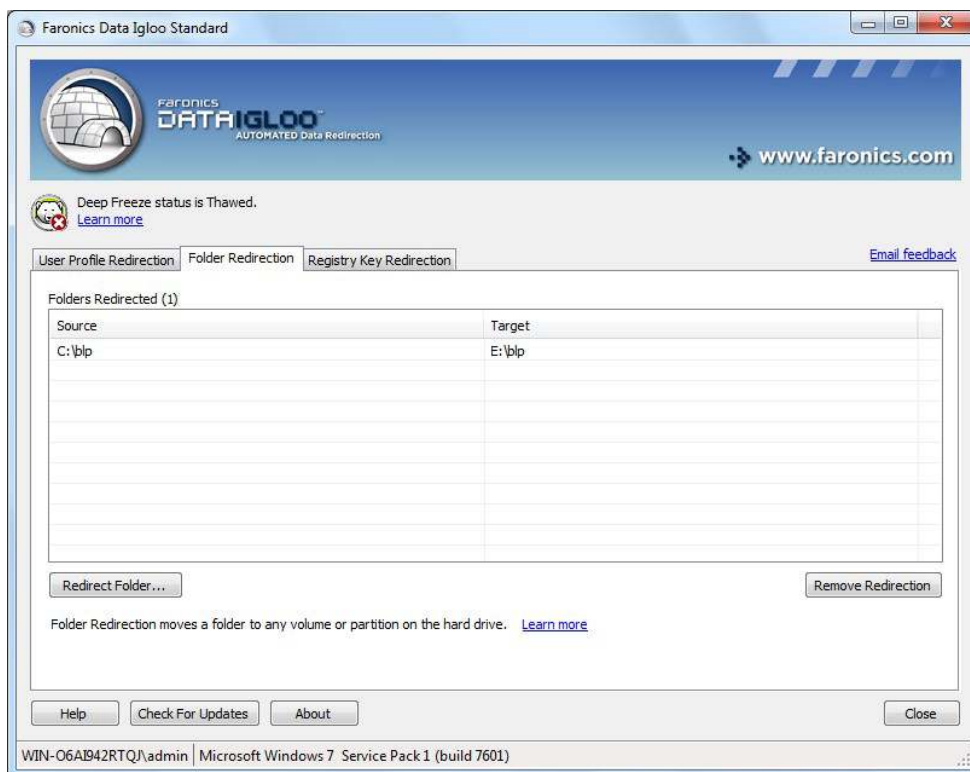


10. The Target drive is now selected. *Copy NTFS permissions* and *Copy Share permissions* are selected by default. Click *Redirect Folder*.

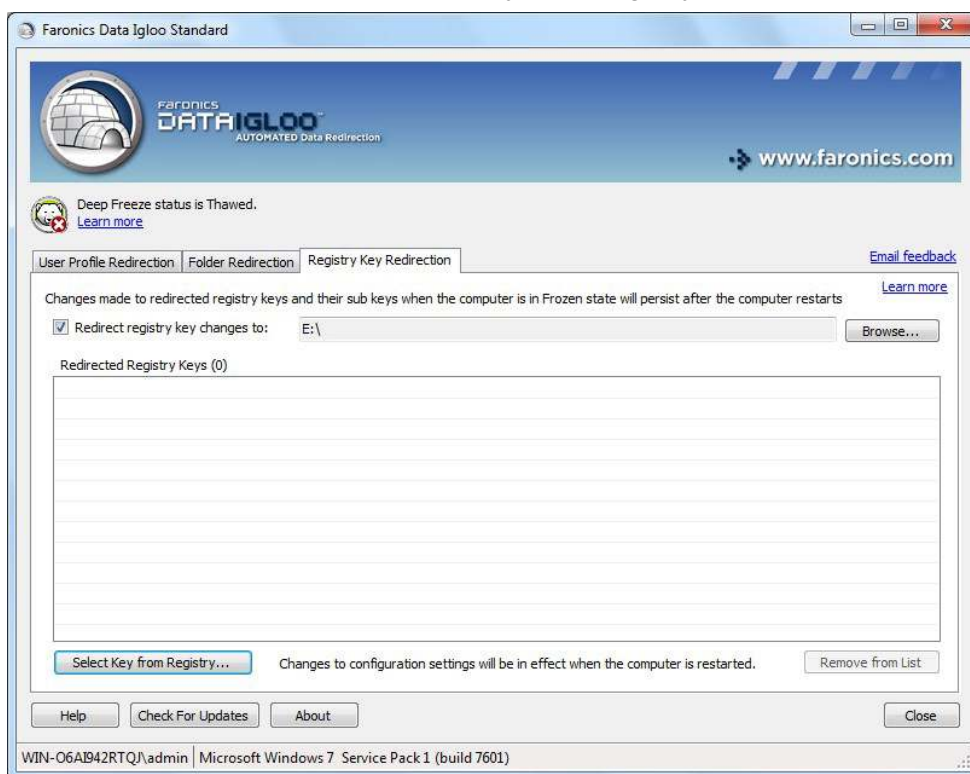




11. The folder redirection is completed.

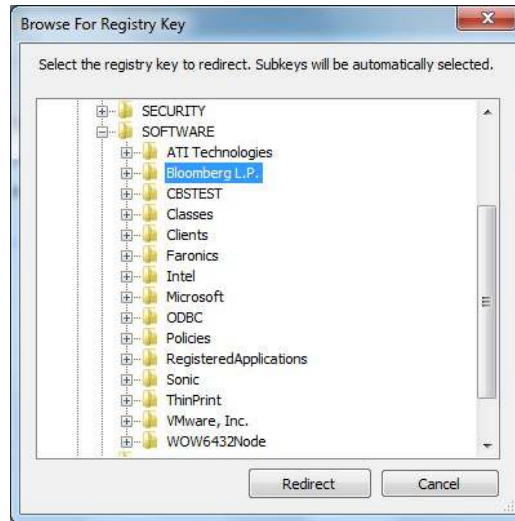


12. Click the *Registry Key Redirection* tab. Select *Redirect registry key changes to* and browse to select E: drive. Click *Select Key from Registry*.

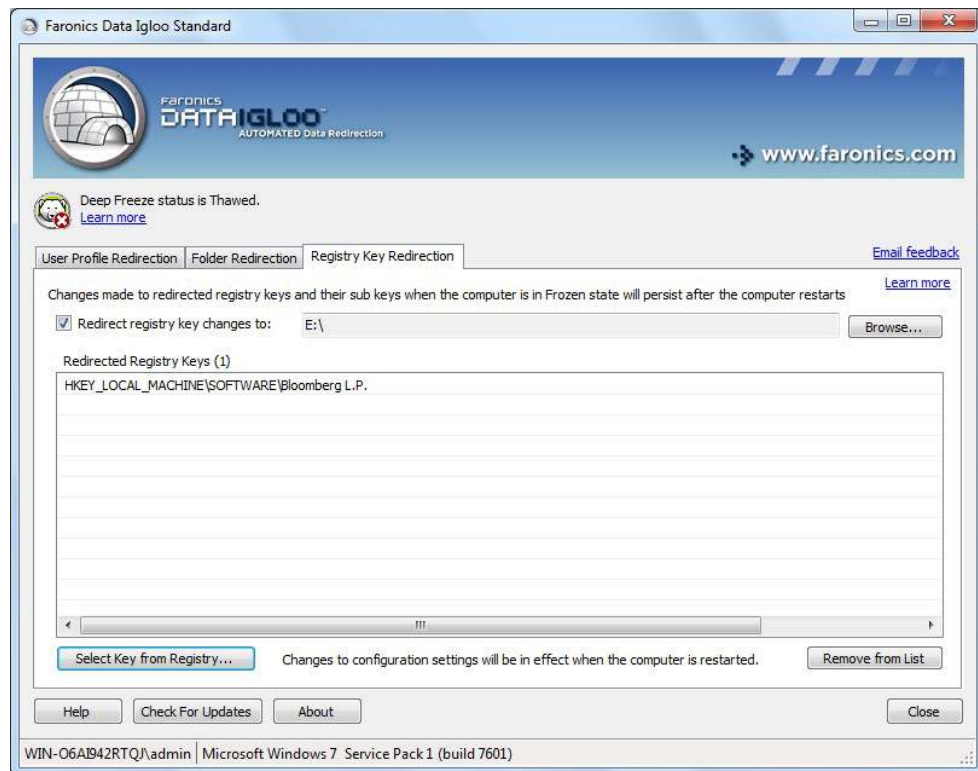




13. Browse to select HKEY_LOCAL_MACHINE\SOFTWARE\Bloomberg L.P. Click *Redirect*.



14. The registry keys for Bloomberg is now redirected to E: drive.



Now, Bloomberg is not only able to save data on E: (Thawed drive), but also able to retain program updates across reboots even when C: drive is Frozen.





Using Data Igloo with Microsoft Security Essentials

When using an anti-virus or an anti-malware program, it is necessary to save the virus definitions on the computer. When the computer is protected by Deep Freeze, the definitions may be lost during a reboot. In addition to the virus definitions, it is necessary to save the configuration, scan history and other data relevant to the user. Some anti-virus programs may not allow changing the folders from C: drive due to their own self-protection mechanisms.

The solution is to create the folders first, redirect them using Data Igloo and then install the Anti-virus program.

The following example provides steps for redirecting the folder and registry keys for Microsoft Security Essentials using Data Igloo:

1. Reboot workstation into *Thawed* state.
2. On the computer where MSE is not installed create following new folders, which will be used by Microsoft Security Essentials:

On all Windows Operating Systems:

```
C:\Program Files\Microsoft Security Client
```

On XP systems:

```
C:\Documents & Settings\All users\Application  
data\Microsoft\Microsoft Security Client
```

```
C:\Documents & Settings\All users\Application  
data\Microsoft\Microsoft Antimalware
```

On Windows 7 systems:

```
C:\Programdata\Microsoft\Microsoft Security Client
```

```
C:\Programdata\Microsoft\Microsoft Antimalware
```

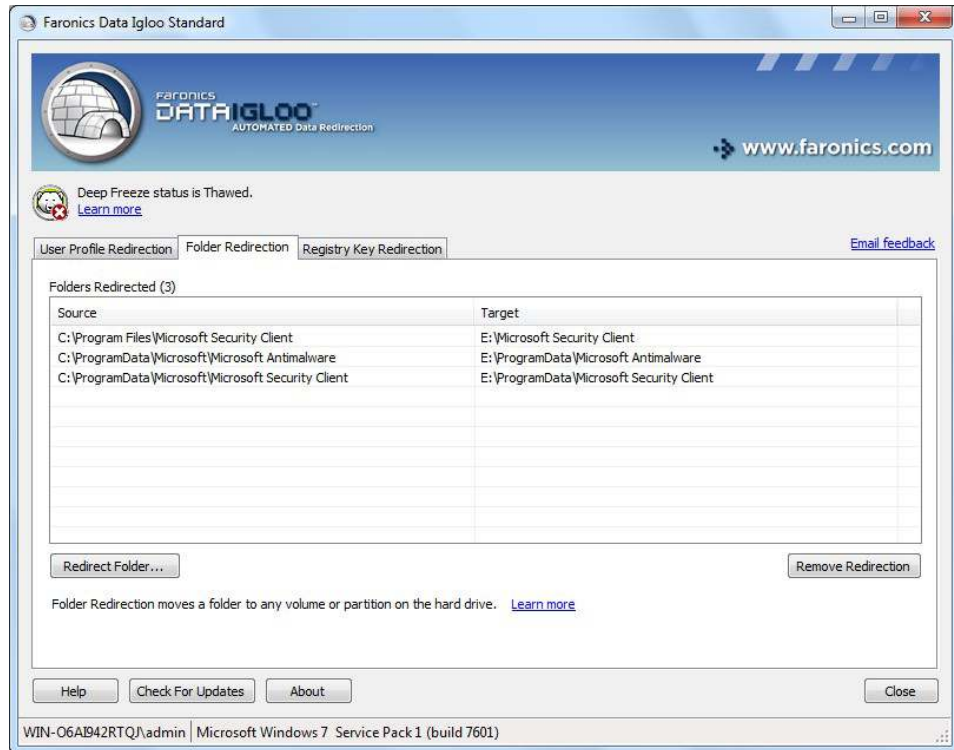
3. Using Data Igloo folder redirection feature, redirect newly created folders to a Thawed location. For this example, we are redirecting to E:

For this example, we are using Windows 7 and the following folders need to be redirected to E:

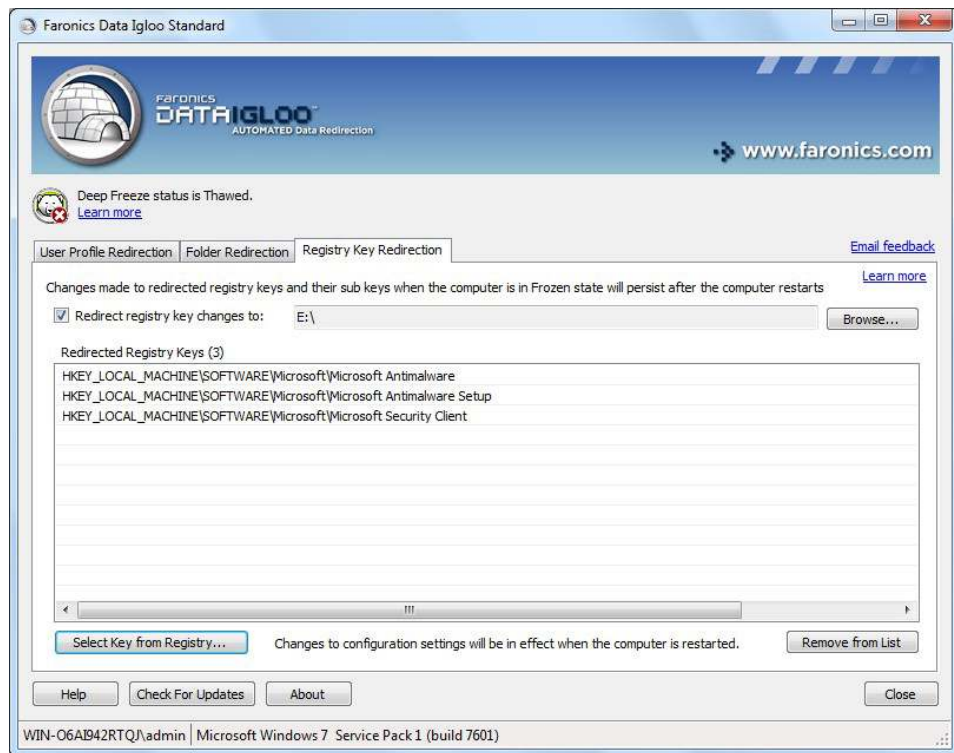
```
C:\Program Files\Microsoft Security Client
```

```
C:\Programdata\Microsoft\Microsoft Security Client
```

```
C:\Programdata\Microsoft\Microsoft Antimalware
```



4. Download and install Microsoft Security Essentials. Update the Anti-virus and Spyware definitions.
5. Using Data Igloo registry redirection feature redirect following registry keys onto a Thawed location. For this example, we have chosen E: drive.





6. Reboot the workstation into *Frozen* state.

All new virus and spyware definitions, history of detected items, as well as Microsoft Security Essentials settings will be retained across reboots. This setup will also allow to retain new version updates of the Microsoft Security Essentials.



This example is only applicable to Windows XP and Windows 7. On Windows 8.1 and Windows 10 version 1903, Microsoft Security Essentials is built-in as part of Microsoft Defender.





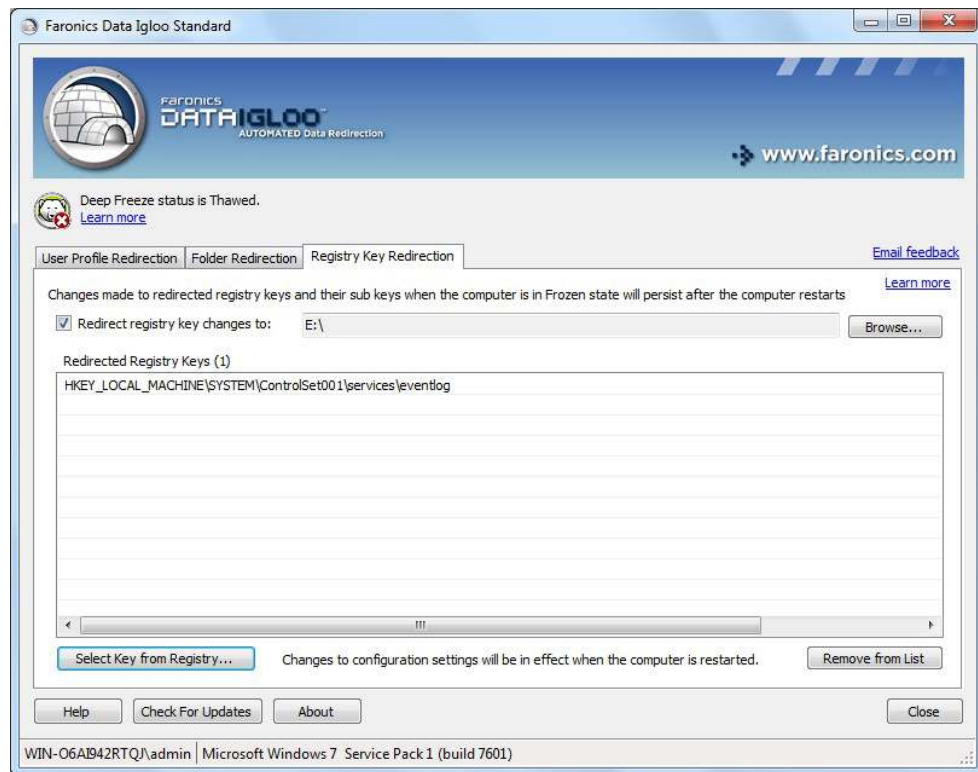
Appendix F Redirecting Event Logs using Data Igloo

When using Deep Freeze to protect computers, the Windows Event Logs are lost on reboot. The Event Logs provide valuable information to IT administrators and may need to be retained.

The solution to this problem is to redirect the registry for Event Logs to a Thawed location using Data Igloo.

The following example provides steps for redirecting the registry keys for Event Logs using Data Igloo:

1. Reboot workstation into *Thawed* state.
2. Using Data Igloo registry redirection feature redirect HKEY_LOCAL_MACHINE\SYSTEM\CurrentControlSet\Services\Eventlog onto a Thawed location. For this example, we have selected E: drive.



3. Reboot the workstation into *Frozen* state.

All new Event Logs will now be retained across reboots even when Deep Freeze is in a *Frozen* state.



To forward Event Logs to a central server if you are running Windows 7 or higher, refer to <http://technet.microsoft.com/en-ca/library/cc748890.aspx>.

